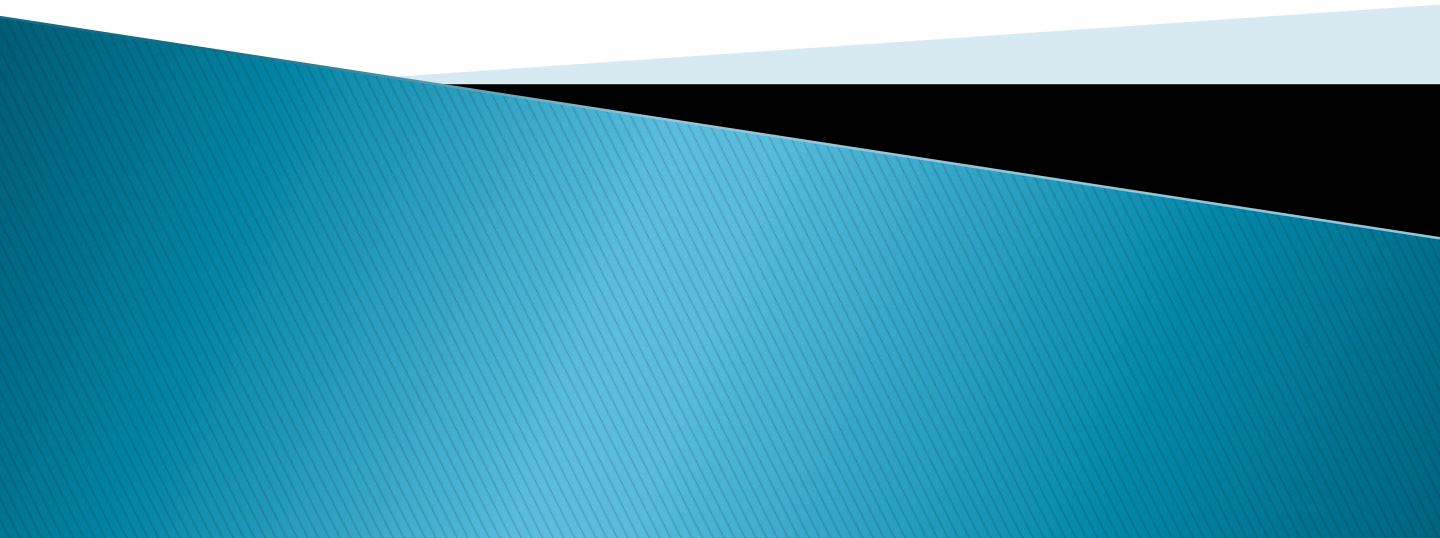




COVE Meeting

CITIZENS' CONSTRUCTION OVERSIGHT AND VALUE ENGINEERING

March 21, 2024



COVE

Meeting Agenda

Thursday, March 21, 2024

8:00 a.m. – 10:00 a.m.

1. Call to Order and Approval of Meeting Minutes

- ♣ Chair Comments – Pat Knipe
- ♣ Approval of February 15, 2024 Meeting Minutes

2. Review Action Items

- ♣ None

3. Department Reports

- ♣ Capital Funding Update – Judith Padres
 - Cash Out Optimization
 - Sales tax, Impact Fee and Quarterly Project History
- ♣ Master Schedule Update – Basem Ghneim / Michael Singh
- ♣ Project Budget Update – Basem Ghneim / Michael Singh
- ♣ Project Status Report – Craig Jackson
- ♣ Change Order Report – Ed Ames / Basem Ghneim

4. Presentations

- ♣ Life Cycle Cost Analysis: Luxury Vinyl Tile (LVT) vs. Vinyl Composition Tile (VCT) – Basem Ghneim
- ♣ Sales Tax Timeline – Rory Salimbene

5. Discussion and Adjournment

- ♣ Next COVE meeting scheduled on Thursday, April 18, 2024

The Construction Oversight and Value Engineering Committee monthly meeting convened on Thursday, February 15, 2024 at 8:00 a.m., at the John T. Morris Facilities Complex, located at 6501 Magic Way, building 200, Orlando, Florida 32809, and virtually through Cisco WebEx.

ATTENDEES

COVE Members: Pat Knipe, Jacki Churchill, Michael Denny and Jeff Hart.

OCPS Team: Ed Ames, Jad Brewer, Mary Lu Bronson, Gerard Cattani, Selimar Colon, Doreen Concolino, Jonathan Earles, Amy Envall, Craig Jackson, Linda Lindsey, Linda Martin, Lori Orr, Andy Orrell, Judith Padres, Tonya Page Batson, Rory Salimbene, David Wheeler, Rocco Williams. Karin Williamson and Mike Winter.

Program Management Team: Mo Arthur, Basem Ghneim, Toni Greene, Krista McArthur, Mark O'Connor, Michael Singh, Brian Smith and Bill Terry.

1. CALL TO ORDER

A quorum was established and Chairman Pat Knipe called the meeting to order at 8:04 a.m.

Chair Comments

Pat Knipe stated the de minimus review presentation would be brought back at a future meeting. He then stated in addition to the Facilities Capital Program Update, he would present an article for discussion from the Orlando Sentinel dated January 22, 2024, entitled "*Lego-like' blocks will be used to build Winter Haven apartments*" (see attached).

Approval of Minutes from Last Meeting

The minutes from January 18, 2024 were presented, and approved unanimously by the committee.

2. ACTION ITEMS

a. Rory Salimbene to provide the de minimis review presentation at a future COVE meeting.

Review of Action Items from Previous Meeting

a. None.

3. DEPARTMENT REPORTS

Capital Funding Update

Judith Padres provided the *updates for capital funding, sales tax collections and impact fee collections*, listed on pages 11-13. She stated we have received six months of impact fee collections from the City of Orlando, one month from the county, and the first quarter from the City of Apopka.

Master Schedule Update

Mark O'Connor briefed the committee on the *master schedule* on page 15.

Project Budget Update

Mark O' Connor continued with his review of the *capital project report* for new and replacement schools on page 17. There are currently 11 projects, spanning phases for planning, design and construction totaling \$690M. There were no budget changes to report.

Next, Mark referenced page 18 of the report and noted that there were 28 comprehensive projects spanning the phases of planning, design and construction amounting to \$1.6B. There were no budget changes to report.

Mark continued with the *capital renewal update* on pages 19-21, where there are 62 active projects at 124 sites showing a budget of \$429M.

Lastly, Mark reviewed the *capital renewal forecast* on page 23, noting there is a fund balance of \$726.1M.

Project Status Report

Craig Jackson reviewed the *capital and comprehensive needs* projects currently under construction, noting there are eight projects in construction (three comprehensive, three relief and two replacements). Additionally, there are currently 16 projects in planning and 12 projects in design.

Craig ended his report by stating there are currently 62 capital renewal projects in construction at 124 sites (35 large, 19 intermediate and eight small).

Change Order Report

Ed Ames reported the data for the month of December 2023, and stated there were no significant change orders for the reporting period. He reminded everyone that "Significant Change" was anything over \$200,000.

- *Jeff Hart questioned the change order for middle school site 129, and requested an analysis to see the potential savings for Luxury Vinyl Tile (LVT) vs. Vinyl Composition Tile (VCT)*

Rory Salimbene said the information would be provided at the next meeting.

To conclude his report, Ed stated there were six RFQs for the month of November 2023.

4. PRESENTATIONS

Facilities Capital Program Update

Rory Salimbene provided an update on the Facilities Capital Program (*see attached*).

5. DISCUSSION / ADJOURNMENT

Chairman Pat Knipe stated the next COVE meeting was scheduled for March 21, 2024.

The chairman thanked everyone for their participation in today's meeting, and commented on the importance of the presentations and how they were very much appreciated and needed.

The meeting was adjourned at 10:00 a.m.

Minutes Authenticated by:

Pat Knipe
Chairperson, COVE Committee

Date of approval

Jad Brewer
Legal Services, Facilities

Date of approval

Attachments:

Facilities Capital Program Update

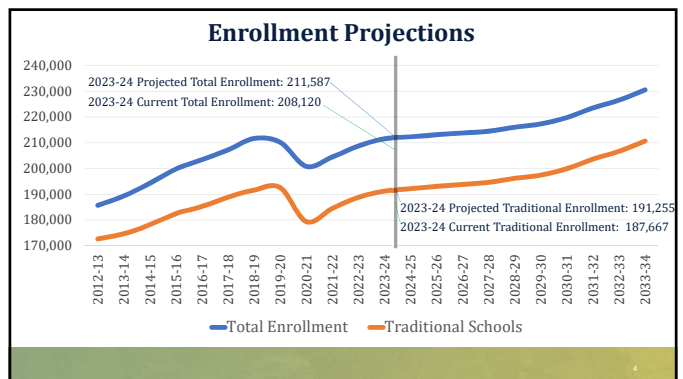
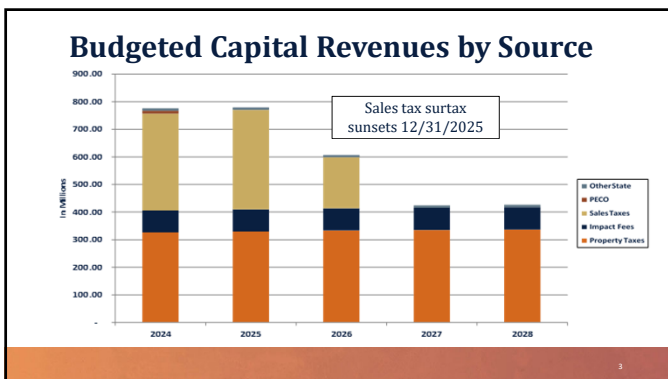
'Lego-like' blocks will be used to build Winter Haven apartments

Facilities Capital Program Update
 January 9, 2024

Orange County Public Schools

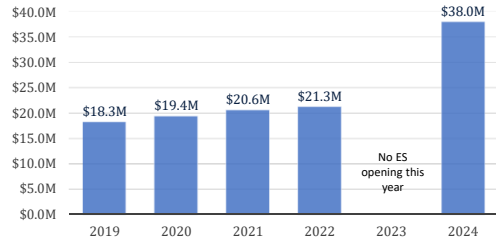
Agenda

- Review capital program funding environment
- Review capital program funding status
 - Funded versus unfunded
 - Impact of sales tax surtax sunset
- Outline next steps for extension of sales tax surtax



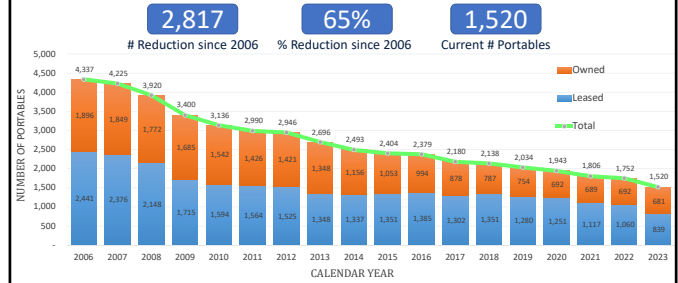
Average Construction Costs (elementary)

Construction cost increase 2019 to 2024: 110%



5

Portable Inventory History



6

Capital Program Elements

- Additional permanent capacity
 - New relief schools
 - Capacity enhancement
- Comprehensive needs
 - Balance of 136 list
 - Twenty pre-sales tax list schools
 - Repurposed facilities
 - Functional equity
 - 136 list schools with limited renovations
 - 2002-2007 new or renovated schools
- Capital renewal
- Ancillary facilities
- Technology
 - Student device refresh
 - Infrastructure and equipment upgrades

7

Capital Program Projected Need FY2024 - FY2033

	<u>Need</u>	<u>Funded</u>	<u>Unfunded</u>
New relief schools	\$ 619M	\$ 619M	\$ - M
Capacity enhancement	\$ 267M	\$ 140M	\$ 127M
Comprehensive needs	\$ 2.729B	\$ 1.384B	\$ 1.345B
Capital renewal	\$ 1.840B	\$ 948M	\$ 892M
Ancillary facilities	\$ 181M	\$ 117M	\$ 64M
<u>Technology</u>	<u>\$ 400M</u>	<u>\$ 114M</u>	<u>\$ 286M</u>
Total	\$ 6.036B	\$ 3.322B	\$ 2.714B

8

Funded Capital Projects

New Relief Schools – 2024 Openings



47-E-W-4
(Horizon West area)
Relieves Hamlin ES, Panther Lake ES
and Water Spring ES



Innovation HS
(50-H-SE-2)
Relieves Lake Nona HS



129-M-SE-2
(South Lake Nona area)
Relieves Lake Nona MS and
South Creek MS

Long Range Capital Improvement Plan for Additional Schools

Priority	Site Identification	Approved Budget (FY24)	Comments
1	97-E-SE-2	2025	Relieves Moss Park ES and Sun Blaze ES
2	130-E-SE-2	2025	Relieves Laureate Park ES
3	126-E-W-4	2026	Second relief for Water Spring ES
4	105-E-SW-3	2027	Relieves Sunshine ES and Sand Lake ES
5	112-E-SE-3	2029	Relieves Wetherbee ES and Stonewyck ES
6	134-E-N-7	2029	Relieves Apopka ES, Wolf Lake ES and Zellwood ES
7	48-M-SW-4	2030	Relieves Southwest MS, Westridge MS and Freedom MS
8	58-E-SE-2	2030	Relieves Moss Park ES, Sun Blaze ES and site 97-E-SE-2
9	56-M-SE-2	2031	Relieves Innovation MS
10	124-E-W-4	2032	Third relief for Water Spring ES

Capacity Enhancement Projects

Campus	Project	Status	Construction Start	Construction Complete
Dr. Phillips ES ^[4]	12 Classroom addition	Design	March 2024	July 2025
Hunter's Creek ES ^[3]	8 Classroom addition	Design	March 2024	July 2025
Whispering Oak ES ^[4]	10 Classroom addition	Design	March 2024	July 2025
College Park MS ^[6]	11 Classroom addition	Design	February 2024	July 2025
Hunter's Creek MS ^[3]	12 Classroom addition	Design	February 2024	July 2025
Westridge MS ^[5]	9 Classroom addition	Design	February 2024	July 2025
Oak Ridge HS ^[5]	15 Classroom addition	Design	August 2024	July 2025

[#] numbers in brackets on all slides indicate School Board member district in which the school resides

Balance of Sales Tax List – Technical Colleges

Campus	Project Type	Status	Construction Start	Construction Complete
OTC Main Campus ^[5]	Comprehensive	Construction	March 2022	February 2024
OTC West Campus ^[7]	Replacement	Construction	September 2022	March 2024
OTC East Campus ^[1]	Replacement	Construction	June 2023	December 2024
OTC South Campus ^[5]	Comprehensive/Replacement	Design	September 2025	May 2027

13

Pre-2003 Sales Tax List Comprehensive Projects (1 of 2)

Campus	Project Type	Status	Construction Start	Construction Complete
Three Points ES ^[2]	Renovation	Design	May 2024	July 2025
Howard MS ^[6]	Renovation	Construction	June 2023	December 2025
Avalon ES ^[1]	Renovation	Design	August 2024	April 2026
Camelot ES ^[1]	Renovation	Design	August 2024	April 2026
Citrus ES ^[7]	Renovation	Design	August 2024	April 2026
Endeavor ES ^[3]	Renovation	Design	August 2024	April 2026
Lakeview MS ^[7]	Renovation	Construction	November 2023	August 2026
Colonial HS ^[2]	Renovation	Design	August 2024	June 2026
Winter Park HS ^[6]	Renovation	Design	March 2024	July 2026
Northlake Park ES ^[2]	Renovation	Planning	June 2025	December 2026

14

Pre-2003 Sales Tax List Comprehensive Projects (2 of 2)

Campus	Project Type	Status	Construction Start	Construction Complete
Lawton Chiles ES ^[1]	Renovation	Planning	June 2025	December 2026
Oakshire ES ^[3]	Renovation	Planning	June 2025	December 2026
Ocoee MS ^[7]	Renovation	Planning	June 2025	December 2026
Palmetto ES ^[5]	Renovation	Planning	June 2025	December 2026
Chain of Lakes MS ^[4]	Renovation/Addition	Planning	September 2025	July 2027
Timber Creek HS ^[1]	Renovation/Addition	Planning	September 2025	June 2027
Boone HS ^[3]	Renovation	Planning	November 2025	July 2027
Jones HS ^[5]	Renovation	Planning	November 2025	July 2027
Olympia HS ^[4]	Renovation	Planning	November 2025	July 2027
Odyssey MS ^[2]	Renovation	Planning	January 2026	July 2027

15

Repurposed Facilities

Facility	SB Dist	New Use	Status	Completion
West Orange 9 th GC	4	ESTEEM/Hospital Homebound/ESE Transition	Renovation in planning	TBD
Gateway School	5	Orange County Virtual School (OCVS)	Renovation in planning	TBD
Cherokee School	6	Arts Conservatory	Programming underway Sponsor discussions ongoing	TBD
Clarcona ES	7	Introduction to Agribusiness	Demolition underway Replacement unfunded	TBD
Pine Castle ES	3	Pre-K Center	Unfunded - reevaluating need	TBD
OTC East (Winter Park)	1	Modeling and Simulation Magnet	Unfunded	TBD
Maxey ES (former)	7	Northwest Maintenance/ESE Transition/Special Hearts Farm	Addressing maintenance occupancy requirements	Move TBD
Kaley ESE Services	3	Audiology program ESE administrative office	Renovation in planning	TBD
Silver Star Center	6	Alternative Education administration	Renovation in planning	TBD
OTC West	7	Full-service transportation compound	Tentative swap for alternate location	TBD

Unfunded

16

Capital Renewal Program

<u>Fiscal Year</u>	<u>Status</u>	<u>Budget</u>
FY14 through FY23	Actual	\$358 million
	Complete	\$358 million
FY24 ¹	Funded	\$392 million
FY25 through FY27	Funded	\$556 million
	Budgeted	\$948 million



¹ 58 active projects for work at 112 sites

17

Ancillary Facilities and Technology

- Ancillary system renewal: \$110M
- Northeast Maintenance (new facility): \$ 7M
- Device refresh FY24 – FY26: \$114M

18

Unfunded Capital Needs

19

AP Capacity Enhancement Recommendations

Priority #	School	Recommended Completion Year
1	Timber Creek HS ^[1]	2026
2	Cypress Creek HS ^[3]	2026
3	Dr. Phillips HS ^[5]	2026
4	University HS ^[1]	2027
5	Prairie Lake ES ^[7]	2027
6	Lockhart MS ^[7]	2030

¹ Timber Creek HS capacity enhancement funded in comprehensive project

20

Comprehensive Needs

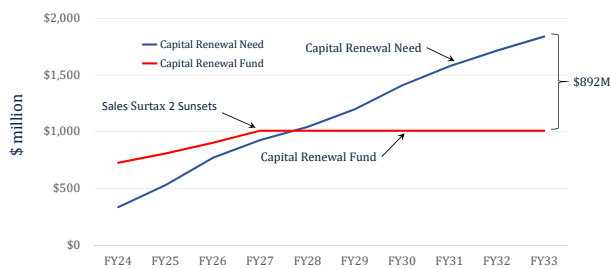
- 136 list schools with limited renovation: \$432M
- 2002-2007 new or renovated schools: \$768M¹
- Repurposed schools \$145M

¹ Excludes requirements for new or replacement schools opening in 2005-2007

Repurposed Facilities

	Facility	SB Dist	New Use	Status	Completion
Schools	West Orange (H.C.)	4	ESTEEM/Hospital Homebound/ESE Transition	Renovation in planning	TBD
	Gateway School	5	Orange County Virtual School (OCVS)	Renovation in planning	TBD
	Cherokee School	6	Arts Conservatory	Programming underway Sponsor discussions ongoing	TBD
	Clarcona ES	7	Introduction to Agribusiness	Demolition underway Replacement unfunded	TBD
	Pine Castle ES	3	Pre-K Center	Unfunded - reevaluating need	TBD
	OTC East (Winter Park)	1	Modeling and Simulation Magnet	Unfunded	TBD
Ancillary	Maxey ES (former)		Northwest Maintenance/ESE Transition/Special Hearts Farm	Addressing maintenance occupancy requirements	Move TBD
	Raley ESE Services	3	Audiology program ESE administrative office	Renovation in planning	TBD
	Silver Star Center	6	Alternative Education administration	Renovation in planning	TBD
	OTC West	7	Full-service transportation compound	Tentative swap for alternate location	TBD ²²

Capital Renewal Need vs Funding



Ancillary Facilities and Technology

- Ancillary comprehensive needs: \$ 64M
- Device refresh FY27 – FY33: \$286M

Other Capital Requests

- ~~Shade structures for youth playgrounds (\$15M) ¹~~
- Covered outdoor dining areas (\$16M)
- Expansion of covered play areas for elementary and K8 schools (\$6M)
- High school athletic facilities equity (\$TBD)
- Gymnasiums for K8 schools (\$20M)
- Artificial turf for high school football fields (\$28M)

¹ Shade structures funded in FY24 budget

Capital Program Projected Need FY2024 - FY2033

	<u>Need</u>	<u>Funded</u>	<u>Unfunded</u>
New relief schools	\$ 619M	\$ 619M	\$ - M
Capacity enhancement	\$ 267M	\$ 140M	\$ 127M
Comprehensive needs	\$ 2.729B	\$ 1.619B	\$ 1.110B
Capital renewal	\$ 1.840B	\$ 948M	\$ 892M
Ancillary facilities	\$ 181M	\$ 117M	\$ 64M
<u>Technology</u>	\$ 400M	\$ 114M	\$ 286M
Total	\$ 6.036B	\$ 3.557B	\$ 2.479B

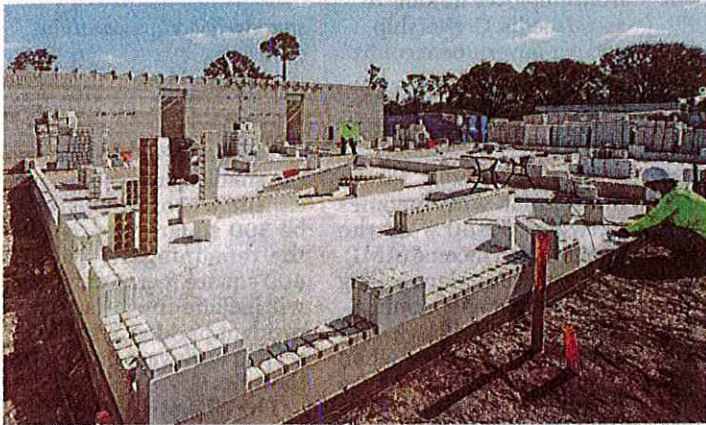
Next Steps

- Gather schools and community input on facility needs via ThoughtExchange January/February 2024
- Update enrollment projections, capital improvement plan and budget needs for new schools and capacity enhancement April 2024
- Update comprehensive and capital renewal needs forecast April 2024
- Facilities update to Board/Board budget priorities May 7, 2024
- Final adoption of resolution and ballot language by the Board May 28, 2024
- Approval of referendum by Board of County Commissioners June 4, 2024
- Ballot language (English & Spanish) to Supervisor of Elections June 14, 2024
- Referendum on General Election ballot November 5, 2024



Superintendent's Comments School Board Questions and Discussion





'Lego-like' blocks will be used to build Winter Haven apartments

By Tyler Williams
GrowthSpotter

A new project in the works for Winter Haven aims to address the area's affordable housing shortage with a simple, yet livable design, according to a report in GrowthSpotter.

The developer is using a "Lego-like" building method with a recycled material called Renco, which comes from combining the words

renewable and composite. The bricks join together like Legos, which simplifies and quickens the building process compared to traditional construction methods using concrete, steel, and wood.

First developed in Turkey over a decade ago, Renco is now approved for construction in the United States and is increasing in popularity within Florida since it holds up well against hurricanes. The first building state-side to use the construction method

was an apartment building in Palm Springs, Florida, that was built 20% cheaper and 20% faster than a typical project constructed with concrete.

Freedom Housing Partners will serve as the developer for the Avenue G Garden Apartments, which will bring 120 studio and one-bedroom apartments, ranging from 300 to 400 square feet, to Winter Haven in Polk County.

Turn to Blocks, Page 2

With little more than a mallet, a glue gun and a color-coded instruction manual, a team of 11 laborers recently built an entire 96-unit apartment building in less than two months using the same Renco bricks that will be used in Winter Haven. **RENCO USA**

©2020 Orlando Sentinel Communications Company



Please recycle. Newsprint is a renewable resource.



ORLANDO SENTINEL
MONDAY, JANUARY 22, 2024

Blocks

from Page 1

Vero Beach-based Carter Associates is the civil engineer and Pinecrest-based wha design is the architect. Bruce Arthur, president of wha design and a partner in Freedom Housing Partners, told GrowthSpotter that a general contractor has yet to be selected, but that the project should begin construction later this year.

"Realistically, we will start construction in early September 2024 and [be ready] for occupancy in early September 2025," according to Arthur. "All-inclusive,

including water, electric, and rent, the apartments should be in the \$1,000 per month range."

Simplicity and relative affordability are major selling points for the Renco system. According to Arthur, another upside of the Lego-like method is its quality building materials.

"We are using the Lego-like system because the blocks are environmentally clean. They are made up of recyclable materials, have wind load properties stronger than a conventional block, and qualify for LEED Certification, all making Avenue G Gardens an extra special place to live", Arthur

said.

Avenue G will target households with incomes between 30-60% of the Area Median Income (AMI). The project's unique selling point is the simple, minimalist design that will keep rent affordable, at a time when rent and housing costs are steadily increasing across the region.

According to RentCafe, the average rent in Winter Haven is \$1,536 per month for a 982-square-foot apartment. In many cases, renters would have to pay additional fees and utilities on top of that base rent.

Rents for the Avenue G Garden Apartments will

remain affordable due to the small square footage of each unit: 72 of the units will be 300 square feet, while the remaining 48 will be 400 square feet. Amenities will include on-site laundry, resident parking, and landscaped walkways outside of the units.

The "Lego-like" apartment complex will be only a 20-minute drive away from Winter Haven-based Legoland, a major economic driver in the region.

Have a tip about Central Florida development? Contact me at Newsroom@GrowthSpotter.com or 407-420-6261.

CAPITAL FUNDING UPDATE

**FY2024 Sales Tax Forecast Compared To Collections
For Collections Received For The Period June 1, 2023 - May 31, 2024**

	Fiscal Year 2019 Actual Collections	Fiscal Year 2020 Actual Collections	Fiscal Year 2021 Actual Collections	Fiscal Year 2022 Actual Collections	Fiscal Year 2023 Actual Collections	Fiscal Year 2024 Projected Collections	Fiscal Year 2024 Actual Collections	Date Received	Actual vs Projection				Actual vs Prior Year			
									Difference Monthly	% Difference Monthly	Difference Year To Date	% Difference Year To Date	Difference With Prior Year	% Difference With Prior Year	Cum Difference With Prior Year	% Cum Difference With Prior Year
June	21,813,615	22,925,741	13,108,514	23,848,325	28,818,745	24,933,405	28,368,958	8/28/2023	3,435,553	13.78%	3,435,553	13.78%	(449,787)	-1.56%	(449,787)	-1.56%
July	20,771,709	21,966,783	13,655,914	23,820,627	26,552,569	24,271,373	26,949,604	9/27/2023	2,678,231	11.03%	6,113,784	12.43%	397,035	1.50%	(52,752)	-0.10%
August	19,375,685	20,607,144	13,689,148	20,150,373	25,312,864	22,422,764	24,992,029	10/26/2023	2,569,265	11.46%	8,683,049	12.12%	(320,834)	-1.27%	(373,587)	-0.46%
Quarter - Distribution	3,260,952	3,338,214	4,014,607	5,620,309	7,333,106	6,432,030	7,252,252	11/6/2023	820,222	12.75%	9,503,271	12.17%	(80,853)	-1.10%	(454,440)	-0.52%
Quarter - Total	65,221,961	68,837,881	44,468,184	73,439,633	88,017,283	78,059,572	87,562,843				9,503,271	12.17%			(454,440)	-0.52%
September	20,029,499	20,695,054	15,713,676	21,896,095	25,711,154	24,002,925	26,984,726	11/27/2023	2,981,801	12.42%	12,485,072	12.23%	1,273,572	4.95%	819,132	0.72%
October	21,176,213	22,650,187	15,709,696	23,905,773	27,564,584	25,465,794	27,848,145	12/26/2023	2,382,351	9.36%	14,867,424	11.66%	283,561	1.03%	1,102,693	0.78%
November	21,848,770	23,121,776	16,337,370	25,794,011	27,841,619	26,524,510	28,285,348	1/29/2024	1,760,838	6.64%	16,628,262	10.79%	443,729	1.59%	1,546,422	0.91%
Quarter - Distribution	3,646,732	3,532,907	4,523,961	7,274,990	7,902,837	7,468,313	8,185,741	2/6/2024	717,428	9.61%	17,345,689	10.74%	282,904	3.58%	1,829,326	1.03%
Quarter - Total	66,701,214	69,999,923	52,284,704	78,870,869	89,020,194	83,461,542	91,303,960				17,345,689	10.74%			1,829,326	1.03%
First 1/2 Year Total	131,923,175	138,837,805	96,752,888	152,310,502	177,037,477	161,521,114	178,866,803				17,345,689	10.74%			1,829,326	1.03%
December	23,379,047	25,393,825	17,165,676	28,708,776	32,031,954	29,531,809	29,962,406	2/27/2024	430,597	1.46%	17,776,286	9.30%	(2,069,548)	-6.46%	(240,222)	-0.11%
January	21,073,611	23,118,851	15,817,302	23,523,330	27,182,532	25,216,789			0	0.00%	-	0.00%	0	0.00%	-	0.00%
February	21,507,567	21,922,091	17,365,549	25,504,014	27,632,509	26,725,064			0	0.00%	-	0.00%	0	0.00%	-	0.00%
Quarter - Distribution	3,452,049	4,004,206	4,909,457	8,256,308	8,565,493	8,237,620			0	0.00%	-	0.00%	0	0.00%	-	0.00%
Quarter - Total	69,412,273	74,438,972	55,257,984	85,992,429	95,412,488	89,711,282	29,962,406				-	0.00%			-	0.00%
3/4 Year Total	201,335,448	213,276,777	152,010,872	238,302,930	272,449,966	251,232,396	208,829,209				-	0.00%			-	0.00%
March	25,501,978	16,298,832	23,660,893	31,317,507	31,873,069	32,922,594			0	0.00%	-	0.00%	0	0.00%	-	0.00%
April	22,737,566	9,524,264	21,512,382	28,431,166	29,167,856	29,988,585			0	0.00%	-	0.00%	0	0.00%	-	0.00%
May	21,730,575	11,135,296	21,709,815	27,010,484	27,202,256	28,779,795			0	0.00%	-	0.00%	0	0.00%	-	0.00%
Quarter - Distribution	3,151,332	3,730,011	4,753,904	7,350,019	7,597,320	7,468,106			0	0.00%	-	0.00%	0	0.00%	-	0.00%
Quarter - Total	73,121,451	40,688,403	71,636,994	94,109,175	95,840,501	99,159,080	-				-	0.00%			-	0.00%
Second 1/2 Year Total	142,533,724	115,127,375	126,894,978	180,101,604	191,252,989	188,870,362	29,962,406				-	0.00%			-	0.00%
Annual Total	274,456,899	253,965,180	223,647,866	332,412,105	368,290,467	350,391,476	208,829,209				-	0.00%			-	0.00%

Orange County Public Schools Sales Tax Collection History

Fiscal Year	Amount
2003	48,842,740
2004	138,701,456
2005	149,353,778
2006	166,421,562
2007	170,597,436
2008	166,190,269
2009	154,176,278
2010	150,843,957
2011	163,594,345
2012	170,826,444
2013	181,301,579
2014	191,770,163
2015	209,540,613
2016	224,024,409
2017	233,873,477
2018	257,649,248
2019	274,456,899
2020	253,965,180
2021	223,647,866
2022	332,412,105
2023	368,290,467
2024	208,829,209 *
Total	4,439,309,478

* Amount collected thru December 2023

Impact Fees Collections

	FY19	FY20	FY21	FY22	FY23	FY24
July	(1,356,434)	(791,922)	(15,459)	(1,326,589)	0	(6,775,236)
August	1,544,905	1,642,692	3,021,080	2,198,714	651,853	10,226,811
September	4,802,716	6,418,111	4,902,480	282,676	1,211,965	88,664
October	12,782,279	5,018,829	11,324,673	15,541,805	18,406,599	15,251,741
November	764,538	11,783,397	744,321	3,824,286	626,571	1,644,118
December	544,774	531,273	1,049,444	2,896,867	18,822	-
January	14,550,401	1,435,048	56,625	14,137,661	16,638,979	4,476,377
February	3,319,118	11,250,567	3,010,120	3,056,570	645,056	7,139,901
March	929,755	1,613,436	3,125,497	2,347,260	2,677,874	
April	11,439,392	10,735,683	6,887,734	4,786,133	3,909,942	
May	674,261	2,027,236	5,720,199	16,810,116	25,302,244	
June	14,645,906	14,200,335	21,268,703	29,769,895	12,949,506	
Total	64,641,613	65,864,685	61,095,416	94,325,395	83,039,410	32,052,376

As of 3-7-24

Sales Tax Referendum Projects and Expenditures/Commitments History to Date
March 7, 2024

Prt	School Name	Architect	Contractor	Fiscal Years 2003-2023 Expenditures	FY2024 Current Budget	24 Pre-Enc	24 Enc	24 Exp	Balance	Project Status
1	Meadowbrook Middle	Schenkel Shultz	H.C. Beck	\$ 26,049,489	\$ -	\$ -	\$ -	\$ -	\$ -	Complete
2	Liberty Middle	Hunton Brady Architects	Ajax Corporation	\$ 17,662,038	\$ -	\$ -	\$ -	\$ -	\$ -	Complete
3	McCoy Elementary	Schenkel Shultz	Turner Construction	\$ 14,533,402	\$ -	\$ -	\$ -	\$ -	\$ -	Complete
4	Roberto Clemente MS	Rhodes and Brito Architects	Centex Rooney	\$ 20,067,753	\$ -	\$ -	\$ -	\$ -	\$ -	Complete
5	Windy Ridge K-8	BRPH Architects	Wharton Smith	\$ 26,815,040	\$ -	\$ -	\$ -	\$ -	\$ -	Complete
6	Colonial 9th Grade Center	Starmer Ranaldi	Skanska/JCB	\$ 25,576,872	\$ -	\$ -	\$ -	\$ -	\$ -	Complete
7	Ridgewood Park Elementary	Vitetta Group	Barton Malow	\$ 17,592,971	\$ -	\$ -	\$ -	\$ -	\$ -	Complete
8	Tildenville Elementary	Hanson Professional Svs	Biltmore Construction	\$ 12,034,843	\$ -	\$ -	\$ -	\$ -	\$ -	Complete
9	Bonneville Elementary	Stottler Stag	Welbro Bldg Corp.	\$ 14,177,594	\$ -	\$ -	\$ -	\$ -	\$ -	Complete
10	Bay Meadows Elementary	Starmer Ranaldi	Wharton Smith	\$ 16,276,478	\$ -	\$ -	\$ -	\$ -	\$ -	Complete
11	Cheney Elementary	Reynolds, Smith & Hills	Williams Company	\$ 14,436,372	\$ -	\$ -	\$ -	\$ -	\$ -	Complete
12	Catalina Elementary	Schenkel Shultz	Walker & Company	\$ 16,627,751	\$ -	\$ -	\$ -	\$ -	\$ -	Complete
13	Sadler Elementary	C.T Hsu	Morganti Group	\$ 17,127,955	\$ -	\$ -	\$ -	\$ -	\$ -	Complete
14	Union Park Middle	C.T Hsu	McCree	\$ 3,882,638	\$ -	\$ -	\$ -	\$ -	\$ -	Complete
15	Apopka 9th GC			\$ -	\$ -	\$ -	\$ -	\$ -	\$ -	Complete/Incl as part of HS
16	Apopka High	Schenkel Shultz	Skanska/JCB	\$ 80,625	\$ -	\$ -	\$ -	\$ -	\$ -	Complete
17	Windermere Elementary	Harvard Jolly	McCree	\$ 15,267,318	\$ -	\$ -	\$ -	\$ -	\$ -	Complete
18	Orlo Vista Elementary	Reynolds, Smith & Hills	Williams Construction	\$ 10,853,196	\$ -	\$ -	\$ -	\$ -	\$ -	Complete
19	Lockhart Middle	Reynolds, Smith & Hills	Barton Malow	\$ 21,698,980	\$ -	\$ -	\$ -	\$ -	\$ -	Complete
20	Conway Elementary	BRPH Architects	Williams Construction	\$ 15,540,301	\$ -	\$ -	\$ -	\$ -	\$ -	Complete
21	Robinswood Middle	Rhodes and Brito Architects	Hunt Gomez	\$ 25,225,527	\$ -	\$ -	\$ -	\$ -	\$ -	Complete
22	College Park Middle	C.T Hsu	Clark Construction	\$ 26,790,976	\$ -	\$ -	\$ -	\$ -	\$ -	Complete
23	Lakemont Elementary	C.T Hsu	Wharton Smith	\$ 18,086,426	\$ -	\$ -	\$ -	\$ -	\$ -	Complete
24	West Orange HS			\$ -	\$ -	\$ -	\$ -	\$ -	\$ -	Compl. Refunded 06 COPS
25	Shenandoah Elementary	Rhodes and Brito Architects	Ruby Builders	\$ 14,120,543	\$ -	\$ -	\$ -	\$ -	\$ -	Complete
26	Killarney Elementary	Hunton Brady Architects	Wharton Smith	\$ 13,241,138	\$ -	\$ -	\$ -	\$ -	\$ -	Complete
27	Metro West Elementary	Starmer Ranaldi	Morganti Group	\$ 18,651,509	\$ -	\$ -	\$ -	\$ -	\$ -	Complete
28	Conway Middle	Vitetta Group	Walker & Company	\$ 24,529,005	\$ -	\$ -	\$ -	\$ -	\$ -	Complete
29	Maitland Middle	Rhodes and Brito Architects	Welbro Bldg Corp.	\$ 24,078,829	\$ -	\$ -	\$ -	\$ -	\$ -	Complete
30	Palm Lake Elementary	Starmer Ranaldi	Morganti Group	\$ 16,680,694	\$ -	\$ -	\$ -	\$ -	\$ -	Complete
31	Apopka Middle	BRPH Architects	Williams Company	\$ 30,888,502	\$ -	\$ -	\$ -	\$ -	\$ -	Complete
32	Columbia Elementary	Schenkel Shultz	Skanska/JCB	\$ 18,015,384	\$ -	\$ -	\$ -	\$ -	\$ -	Complete
33	Edgewater High	C.T Hsu	WG Mills	\$ 5,945,259	\$ -	\$ -	\$ -	\$ -	\$ -	Complete
34	Discovery Middle	Vitetta Group	McCree	\$ 4,174,752	\$ -	\$ -	\$ -	\$ -	\$ -	Complete
35	Winter Park 9th GC	DLR Group	Skanska/JCB	\$ 26,419,994	\$ -	\$ -	\$ -	\$ -	\$ -	Complete
36	University High	Reynolds, Smith & Hills	Hunt Gomez	\$ 37,722,232	\$ -	\$ -	\$ -	\$ -	\$ -	Complete
37	Walker Middle	Rhodes and Brito Architects	Walker & Company	\$ 3,029,630	\$ -	\$ -	\$ -	\$ -	\$ -	Complete
38	Lake Sybelia Elementary	Vitetta Group	Williams Company	\$ 10,851,745	\$ -	\$ -	\$ -	\$ -	\$ -	Complete
39	Piedmont Lake Middle	Vitetta Group	Williams Company	\$ 4,079,195	\$ -	\$ -	\$ -	\$ -	\$ -	Complete
40	Dr. Phillips 9th GC			\$ -	\$ -	\$ -	\$ -	\$ -	\$ -	Incl as part of HS
41	Rosemont ES	Rhodes and Brito Architects	Wharton Smith	\$ 6,837,233	\$ -	\$ -	\$ -	\$ -	\$ -	Complete
42	Azalea Park ES	Song and Associates	Welbro Bldg Corp.	\$ 14,572,096	\$ -	\$ -	\$ -	\$ -	\$ -	Complete
43	Hunters Creek ES	BRPH Architects	PPI	\$ 3,313,586	\$ -	\$ -	\$ -	\$ -	\$ -	Complete

Sales Tax Referendum Projects and Expenditures/Commitments History to Date
March 7, 2024

Prty	School Name	Architect	Contractor	Fiscal Years 2003-2023 Expenditures	FY2024 Current Budget	24 Pre-Enc	24 Enc	24 Exp	Balance	Project Status
44	Hunters Creek MS	Vitetta Group	Williams Company	\$ 3,400,546	\$ -	\$ -	\$ -	\$ -	\$ -	Complete
45	Waterbridge ES	Stottler Stag	Walker & Company	\$ 15,684,055	\$ -	\$ -	\$ -	\$ -	\$ -	Complete
46	Chickasaw ES	Hunton Brady Architects	Walker & Company	\$ 12,246,375	\$ -	\$ -	\$ -	\$ -	\$ -	Complete
47	Orange Center ES	BRPH Architects	McCree	\$ 10,661,217	\$ -	\$ -	\$ -	\$ -	\$ -	Complete
48	Riverdale ES	Reynolds, Smith & Hills	Hodges Brothers	\$ 893,641	\$ -	\$ -	\$ -	\$ -	\$ -	Complete
49	Gotha MS	Vitetta Group	Williams Company	\$ 4,147,754	\$ -	\$ -	\$ -	\$ -	\$ -	Complete
50	Westridge MS	Zyscovich Architects	Clancy & Theys	\$ 20,466,474	\$ -	\$ -	\$ -	\$ -	\$ -	Complete
51	Southwood ES	Rhodes and Brito Architects	Wharton Smith	\$ 1,381,936	\$ -	\$ -	\$ -	\$ -	\$ -	Complete
52	Lakeville ES	Reynolds, Smith & Hills	Wharton Smith	\$ 488,647	\$ -	\$ -	\$ -	\$ -	\$ -	Complete
53	Pinewood ES	Reynolds, Smith & Hills	R.L. Burns	\$ 368,128	\$ -	\$ -	\$ -	\$ -	\$ -	Complete
54	Zellwood ES	DLR Group	Balfour Beatty	\$ 16,209,000	\$ -	\$ -	\$ -	\$ -	\$ -	Complete
55	Memorial Middle	Schenkel Shultz	Balfour Beatty	\$ 2,660	\$ -	\$ -	\$ -	\$ -	\$ -	Complete
56	Cypress Springs ES	Stottler Stag	Walker & Company	\$ 16,744,000	\$ -	\$ -	\$ -	\$ -	\$ -	Complete
57	Princeton ES	Rhodes and Brito Architects	Doster Constr	\$ 17,755,369	\$ -	\$ -	\$ -	\$ -	\$ -	Complete
58	Dr. Phillips HS	C.T Hsu	J.A. Cummings	\$ 65,579,833	\$ -	\$ -	\$ -	\$ -	\$ -	Complete
59	Rock Springs ES	BRPH Architects	Turner Construction	\$ 15,721,496	\$ -	\$ -	\$ -	\$ -	\$ -	Complete
60	Aloma ES	Rhodes and Brito Architects	Doster Constr	\$ 11,641,264	\$ -	\$ -	\$ -	\$ -	\$ -	Complete
61	Spring Lake ES	BRPH Architects	Charles Perry	\$ 14,051,417	\$ -	\$ -	\$ -	\$ -	\$ -	Complete
62	Arbor Ridge K8	Schenkel Shultz	Mills Gilbaine	\$ 4,476,568	\$ -	\$ -	\$ -	\$ -	\$ -	Split Funded 2010 QSCB & Sal
63	Little River ES	C.T Hsu	J.A. Cummings	\$ 13,148,115	\$ -	\$ -	\$ -	\$ -	\$ -	Complete
64	Eccleston ES	Rhodes and Brito Architects	Williams Company	\$ 3,800,094	\$ -	\$ -	\$ -	\$ -	\$ -	Split Funded 2010 QSCB & Sal
65	Acceleration West	BRPH	T & G Constructors	\$ 13,090,668	\$ 1,185,333	\$ -	\$ 147,043	\$ 2,000	\$ 1,036,290	Complete
66	Shingle Creek ES	Schenkel Shultz	Walbridge Aldinger	\$ 121,824	\$ -	\$ -	\$ -	\$ -	\$ -	Complete
67	Oak Ridge High	Schenkel Shultz	Wharton Smith	\$ (122,586)	\$ -	\$ -	\$ -	\$ -	\$ -	Complete
68	Dommerich ES	Rhodes and Brito Architects	Welbro Bldg Corp.	\$ 16,685,578	\$ -	\$ -	\$ -	\$ -	\$ -	Complete
69	Lancaster ES	Rhodes and Brito Architects	Morganti Group	\$ 16,592,755	\$ -	\$ -	\$ -	\$ -	\$ -	Complete
70	Brookshire ES	Hunton Brady Architects	Skanska/JCB	\$ 13,623,234	\$ -	\$ -	\$ -	\$ -	\$ -	Complete
71	Lake Silver ES	Song and Associates	Williams Company	\$ 14,957,991	\$ -	\$ -	\$ -	\$ -	\$ -	Complete
72	Dr. Phillips Elementary	Zyscovich Architects	James Pirtle	\$ 13,587,389	\$ -	\$ -	\$ -	\$ -	\$ -	Complete
73	Ocoee ES	BRPH Architects	McCree	\$ 13,897,808	\$ -	\$ -	\$ -	\$ -	\$ -	Complete
74	OCPS Academic Center for Excellence	Baker Barrios	Williams Company	\$ 55,160,505	\$ 914,515	\$ -	\$ 41,781	\$ -	\$ 872,734	Complete
75	Lake Weston ES	BRPH Architects	McCree	\$ 15,302,914	\$ -	\$ -	\$ -	\$ -	\$ -	Complete
76	West Orange Ninth GC			\$ -	\$ -	\$ -	\$ -	\$ -	\$ -	Complete/Incl as part of HS
77	Waterford ES	Starmer Ranaldi	McCree	\$ 13,136,552	\$ -	\$ -	\$ -	\$ -	\$ -	Complete
78	Cypress Creek HS	C.T Hsu	Wharton Smith	\$ 57,324,722	\$ 46,163	\$ -	\$ 46,163	\$ -	\$ -	Complete
79	Pineloch ES	BRPH Architects	McCree	\$ 13,590,684	\$ -	\$ -	\$ -	\$ -	\$ -	Complete
80	Lake Whitney ES	Hunton Brady Architects	Charles Perry	\$ 9,037,478	\$ -	\$ -	\$ -	\$ -	\$ -	Complete
81	John Young ES	Schenkel Shultz	Walbridge Aldinger	\$ 12,824,644	\$ -	\$ -	\$ -	\$ -	\$ -	Complete
82	Clay Springs ES	Rhodes and Brito Architects	Williams Company	\$ 16,914,908	\$ -	\$ -	\$ -	\$ -	\$ -	Complete
83	Evans High	Schenkel Shultz	Williams Company	\$ 71,499,405	\$ -	\$ -	\$ -	\$ -	\$ -	Complete
84	Lovell ES	Rhodes and Brito Architects	McCree	\$ 14,086,237	\$ -	\$ -	\$ -	\$ -	\$ -	Complete
85	Apopka ES	Harvard Jolly	Welbro Bldg Corp.	\$ 14,458,823	\$ -	\$ -	\$ -	\$ -	\$ -	Complete

Sales Tax Referendum Projects and Expenditures/Commitments History to Date
March 7, 2024

Prty	School Name	Architect	Contractor	Fiscal Years 2003-2023 Expenditures	FY2024 Current Budget	24 Pre-Enc	24 Enc	24 Exp	Balance	Project Status
86	Wheatley ES	Schenkel Shultz	Gilbane Building	\$ 14,640,611	\$ -	\$ -	\$ -	\$ -	\$ -	Complete
87	Lockhart ES	Hunton Brady Architects	Morganti Group	\$ 15,853,653	\$ -	\$ -	\$ -	\$ -	\$ -	Complete
88	Riverside ES	Harvard Jolly	Welbro Bldg Corp.	\$ 15,486,404	\$ 5,795	\$ -	\$ 5,795	\$ -	\$ -	Complete
89	Dream Lake ES	Harvard Jolly	Charles Perry	\$ 16,959,349	\$ -	\$ -	\$ -	\$ -	\$ -	Complete
90	Carver MS	Hunton Brady Architects	Walker & Company	\$ 35,391,009	\$ 23,440	\$ -	\$ -	\$ -	\$ 23,440	Complete
91	Tangelo Park ES	BRPH Architects	Clancy & Theys	\$ 16,214,180	\$ -	\$ -	\$ -	\$ -	\$ -	Complete
92	Dover Shores ES	Rhodes and Brito Architects	Charles Perry	\$ 21,204,502	\$ 319,491	\$ -	\$ 14,649	\$ -	\$ 304,842	Complete
93	Sally Ride ES	Song and Associates	Charles Perry	\$ 19,303,632	\$ 31,150	\$ -	\$ 9,979	\$ -	\$ 21,171	Complete
94	Engelwood ES	Rhodes and Brito Architects	Charles Perry	\$ 17,219,637	\$ -	\$ -	\$ -	\$ -	\$ -	Complete
95	Audubon Park ES			\$ -	\$ -	\$ -	\$ -	\$ -	\$ -	
96	Oak Hill ES	BRPH Architects	Clancy & Theys	\$ 17,080,753	\$ 5,536	\$ -	\$ 818	\$ -	\$ 4,718	Complete
97	Washington Shores ES	Rhodes and Brito Architects	Williams Company	\$ 14,000,246	\$ -	\$ -	\$ -	\$ -	\$ -	Complete
98	Lake Como School	Harvard Jolly	Williams Company	\$ 35,765,645	\$ 164,719	\$ -	\$ 29,269	\$ -	\$ 135,450	Complete
99	Hillcrest ES	C.T Hsu	Wharton Smith	\$ 19,377,033	\$ -	\$ -	\$ -	\$ -	\$ -	Complete
100	Corner Lake MS	C.T Hsu	Wharton Smith	\$ 18,628,620	\$ 501,381	\$ -	\$ 35,002	\$ -	\$ 466,378	Complete
101	Fern Creek ES			\$ -	\$ -	\$ -	\$ -	\$ -	\$ -	
102	Rock Lake ES	BRPH Architects	Williams Company	\$ 19,125,115	\$ 32,744	\$ -	\$ 32,744	\$ -	\$ -	Complete
103	Durrance ES			\$ -	\$ -	\$ -	\$ -	\$ -	\$ -	
104	Kaley ES			\$ -	\$ -	\$ -	\$ -	\$ -	\$ -	
105	Union Park ES	Zyscovich Architects	Pirtle Construction	\$ 19,112,488	\$ 540,513	\$ -	\$ 20,495	\$ -	\$ 520,017	Complete
106	Pine Hills ES	BRPH Architects	Pirtle Construction	\$ 20,519,401	\$ 71,593	\$ -	\$ 25,037	\$ -	\$ 46,556	Complete
107	Hungerford Prep HS			\$ -	\$ -	\$ -	\$ -	\$ -	\$ -	
108	Southwest MS	C.T Hsu	Walker & Company	\$ 22,413,359	\$ 972,490	\$ -	\$ 27,847	\$ (623)	\$ 945,266	Complete
109	Pine Castle ES			\$ -	\$ -	\$ -	\$ -	\$ -	\$ -	
110	Washington Shores PLC	C.T Hsu	Core Construction	\$ 2,883,400	\$ 714,600	\$ -	\$ -	\$ -	\$ 714,600	Complete
111	Lake George ES	Hunton Brady Architects	Core Construction	\$ 11,902,477	\$ 228,523	\$ -	\$ 30,019	\$ -	\$ 198,504	Complete
112	Cherokee Except			\$ 23,797	\$ -	\$ -	\$ -	\$ -	\$ -	
113	Silver Pines	Harvard Jolly	CPPI	\$ 45,320,512	\$ 764,489	\$ -	\$ 113,289	\$ 1,486	\$ 649,714	Close-out
114	Mollie Ray ES	Rhodes and Brito Architects	Pirtle Construction	\$ 16,689,732	\$ -	\$ -	\$ -	\$ -	\$ -	Complete
115	Silver Star Center			\$ -	\$ -	\$ -	\$ -	\$ -	\$ -	
116	Sunrise ES	Hunton Brady Architects	Core Construction	\$ 11,899,972	\$ 392,029	\$ -	\$ 13,553	\$ 4,300	\$ 374,176	Complete
117	Ivey Lane ES	Harvard Jolly	Gilbane Building	\$ 16,798,600	\$ -	\$ -	\$ -	\$ -	\$ -	Complete
118	Lake Gem ES	Hunton Brady Architects	Wharton Smith	\$ 14,963,913	\$ 1,002,587	\$ -	\$ 550,357	\$ 664	\$ 451,565	Complete
119	Deerwood ES	Schenkel Shultz	Pirtle Construction	\$ 21,577,751	\$ 287,748	\$ -	\$ 21,130	\$ -	\$ 266,618	Complete
120	Pershing School	Zyscovich Architects	Williams Company	\$ 36,656,631	\$ 487,370	\$ -	\$ 55,174	\$ 27,209	\$ 404,987	Complete
121	Rolling Hills ES	Zyscovich Architects	Pirtle Construction	\$ 19,241,626	\$ 521,374	\$ -	\$ 25,091	\$ 1,025	\$ 495,258	Complete
122	Meadow Woods ES	Schenkel Shultz	Welbro Bldg Corp.	\$ 19,005,466	\$ 212,577	\$ -	\$ 7,082	\$ -	\$ 205,495	Complete
123	Ventura ES	Schenkel Shultz	Turner Construction	\$ 23,835,409	\$ 191,262	\$ -	\$ 0	\$ -	\$ 191,262	Complete
124	Frangus ES	BRPH Architects	Williams Company	\$ 22,065,623	\$ 74,393	\$ -	\$ 20,309	\$ -	\$ 54,084	Complete
125	Winegard ES	Schenkel Shultz	Williams Company	\$ 21,469,591	\$ 157,409	\$ -	\$ 28,456	\$ -	\$ 128,953	Complete
126	Clarcona ES			\$ -	\$ -	\$ -	\$ -	\$ -	\$ -	
127	Maxey ES	Schenkel Shultz	Clancy & Theys	\$ 16,914,800	\$ 534,704	\$ -	\$ 28,963	\$ -	\$ 505,741	Complete
128	Pinar ES	Schenkel Shultz	R.L. Burns	\$ 18,781,732	\$ 70,268	\$ -	\$ 19,302	\$ (3,174)	\$ 54,140	Complete

Sales Tax Referendum Projects and Expenditures/Commitments History to Date
March 7, 2024

Prty	School Name	Architect	Contractor	Fiscal Years 2003-2023 Expenditures	FY2024 Current Budget	24 Pre-Enc	24 Enc	24 Exp	Balance	Project Status
129	Hungerford ES	Schenkel Shultz	Gilbane Building/ Johnson Laux	\$ 19,279,711	\$ 5,578,289	\$ -	\$ 899,358	\$ 2,007,017	\$ 2,671,914	Complete/Construction (Building 8)
130	Hidden Oaks ES	Harvard Jolly	Core Construction	\$ 18,076,022	\$ 453,681	\$ -	\$ 3,681	\$ 13,400	\$ 436,600	Complete
131	Gateway Except			\$ -	\$ -	\$ -	\$ -	\$ -	\$ -	
132	Meadow Woods MS	C.T Hsu	Wharton Smith	\$ 20,558,564	\$ 738,228	\$ -	\$ 29,738	\$ -	\$ 708,490	Complete
133	OTC -South Campus	Harvard Jolly	Williams Company	\$ 2,673,842	\$ 186,826,158	\$ -	\$ 70,207	\$ 114,026	\$ 186,641,925	Design
134	OTC - West Campus	DLR Group	Wharton Smith	\$ 16,217,245	\$ 48,587,755	\$ -	\$ 17,211,577	\$ 26,142,978	\$ 5,233,201	Construction
135	OTC- East Campus	DLR Group	CPPI	\$ 4,020,310	\$ 59,973,690	\$ -	\$ 34,848,500	\$ 14,628,409	\$ 10,496,781	Construction
136	OTC - Orlando Campus	Harvard Jolly	Gilbane Building	\$ 28,260,555	\$ 18,759,445	\$ -	\$ 5,658,727	\$ 8,860,645	\$ 4,240,073	Construction
	Relief Schools									
	Wekiva HS	Schenkel Shultz	Skanska/JCB	\$ 64,243,219	\$ -	\$ -	\$ -	\$ -	\$ -	Complete
	Village Park ES	Rhodes and Brito Architects	Pirtle Construction	\$ 23,526,696	\$ 744,304	\$ -	\$ 361,461	\$ 2,707	\$ 380,136	Close-out
	Kelly Park School	Zyscovich Architects	Wharton Smith	\$ 2,941,516	\$ 72,483	\$ -	\$ 26,170	\$ 27,999	\$ 18,314	Close-out
	Innovation HS	Zyscovich Architects	Core Construction	\$ 895,753	\$ 35,504,247	\$ -	\$ 32,098,642	\$ 3,405,605	\$ 0	Construction
	97-E-SE-2	Schenkel Shultz	Welbro Bldg Corp.	\$ 460,129	\$ 35,723,871	\$ -	\$ 1,091,606	\$ 100,834	\$ 34,531,431	Design
	Horizon HS	Schenkel Shultz	Wharton Smith	\$ 68,366,292	\$ 1,495,940	\$ -	\$ 436,176	\$ 238,283	\$ 821,481	Close-out
	Pre-2003 Schools									
	Avalon ES	Zyscovich	Wharton Smith	\$ 184,080	\$ 1,640,670	\$ -	\$ 477,573	\$ 687,672	\$ 475,425	Design
	Boone HS	BRPH Architects/Schenkel	Williams Company	\$ 24,752,523	\$ 4,455,994	\$ -	\$ 32,521	\$ (144)	\$ 4,423,616	Close-out/Planning
	Camelot ES	Zyscovich	Wharton Smith	\$ 135,999	\$ 1,688,751	\$ -	\$ 287,137	\$ 616,986	\$ 784,628	Design
	Chain of Lakes MS	Rhodes Brito	T&G Constructors	\$ 129,096	\$ 4,424,904	\$ -	\$ 87,088	\$ 5,685	\$ 4,332,131	Planning
	Citrus ES	Zyscovich	Wharton Smith	\$ 142,051	\$ 1,682,699	\$ -	\$ 336,642	\$ 718,366	\$ 627,691	Design
	Colonial HS	Schenkel Shultz	Gilbane Building/Wharton- Smith	\$ 15,933,815	\$ 84,444,236	\$ -	\$ 2,867,744	\$ 810,716	\$ 80,765,775	Close-out/Design
	Endeavor ES	Zyscovich	Wharton Smith	\$ 142,017	\$ 1,682,733	\$ -	\$ 372,346	\$ 721,536	\$ 588,851	Design
	Howard MS	Rhodes and Brito Architects	Lego Construction	\$ 2,874,721	\$ 54,703,637	\$ 12,970	\$ 37,373,039	\$ 5,306,471	\$ 12,011,158	Construction
	Jones HS	Long & Associates		\$ -	\$ 3,250,000	\$ -	\$ 8,737	\$ 6,450	\$ 3,234,813	Planning
	Lakeview MS	Song and Associates	Wharton Smith	\$ 1,862,641	\$ 47,028,718	\$ -	\$ 37,236,659	\$ 139,256	\$ 9,652,804	Construction
	Lawton Chiles ES	Little Diversified	Lego Construction	\$ 900	\$ 2,765,100	\$ -	\$ 1,466,067	\$ 83,621	\$ 1,215,411	Design
	Northlake Park ES	BRPH Architects/Schenkel	Welbro	\$ 132,564	\$ 3,761,436	\$ -	\$ 2,460,725	\$ 46,966	\$ 1,253,745	Design
	Oakshire ES	Baker Barrios	Johnson-Laux	\$ 900	\$ 2,347,100	\$ -	\$ -	\$ 66,939	\$ 2,280,161	Design
	Ocoee MS	Hunton Brady Architects	Williams Company	\$ 180,919	\$ 57,983,081	\$ -	\$ 309,322	\$ 1,338	\$ 57,672,421	Planning
	Odyssey MS			\$ -	\$ 400,000	\$ -	\$ 170,786	\$ -	\$ 229,214	Planning
	Olympia HS			\$ -	\$ 5,739,000	\$ -	\$ -	\$ -	\$ 5,739,000	Planning
	Palmetto ES	Zyscovich	Williams Company	\$ 900	\$ 3,542,100	\$ -	\$ -	\$ 100,156	\$ 3,441,944	Planning
	Three Points ES	C.T Hsu	CORE	\$ 1,052,776	\$ 21,772,439	\$ -	\$ 299,655	\$ (46,800)	\$ 21,519,584	Design
	Timber Creek HS	Harvard Jolly	Williams Company	\$ -	\$ 5,204,000	\$ -	\$ -	\$ 900	\$ 5,203,100	Design (Split funded with CIT)
	Winter Park HS	C.T Hsu	CPPI	\$ 3,593,659	\$ 78,915,058	\$ -	\$ 4,502,775	\$ 78,243	\$ 74,334,040	Construction
				\$ -						
	Capacity Enhancements			\$ -						
	Apopka MS			\$ 4,290	\$ 4,290	\$ -	\$ -	\$ (4,290)	\$ 8,579	

Sales Tax Referendum Projects and Expenditures/Commitments History to Date
March 7, 2024

Prty	School Name	Architect	Contractor	Fiscal Years 2003-2023 Expenditures	FY2024 Current Budget	24 Pre-Enc	24 Enc	24 Exp	Balance	Project Status
	College Park MS	Little Diversified	Thornton Construct.	\$ 210,278	\$ 615,813	\$ -	\$ 411,783	\$ 203,429	\$ 600	Design
	Dr. Phillips ES	C.T. Hsu	McCree	\$ 205,869	\$ 378,226	\$ -	\$ 261,562	\$ 39,466	\$ 77,198	Design
	Hunters Creek ES	C.T. Hsu	McCree	\$ 277,750	\$ 374,846	\$ -	\$ 208,729	\$ 47,329	\$ 118,787	Design
	Hunters Creek MS	Little Diversified	Thornton Construct.	\$ 181,352	\$ 406,811	\$ -	\$ 215,432	\$ 178,576	\$ 12,803	Design
	Lakeville ES			\$ 11,157	\$ -	\$ -	\$ -	\$ (6,575)	\$ 6,575	
	Oak Ridge HS	Zyscovich	Welbro	\$ 26,547	\$ 608,700	\$ -	\$ 386,746	\$ 221,954	\$ -	Design
	Westridge MS	Little Diversified	Thornton Construct.	\$ 160,837	\$ 272,514	\$ -	\$ 139,837	\$ 119,530	\$ 13,147	Design
	Whispering Oak ES	C.T. Hsu	McCree	\$ 371,885	\$ 425,828	\$ -	\$ 117,865	\$ 61,527	\$ 246,435	Design
	DW Capacity Enhancements			\$ -	\$ 89,489,011	\$ -	\$ -	\$ -	\$ 89,489,011	
	Windermere HS Stadium	Schenkel Shultz	Wharton Smith	\$ 19,080	\$ 9,280,920		\$ 5,701,272	\$ 182,145	\$ 3,397,503	Construction
	D/W Capital			\$ 1,326,700						
	Sub-Total/Bldg & FF&E			\$ 2,299,957,816	\$ 894,200,896	\$ 12,970	\$ 189,817,234	\$ 65,962,239	\$ 638,408,453	
	Site Acquisition/Land related									
	Apopka Elementary School			\$ 888	\$ -	\$ -	\$ -	\$ -	\$ -	
	Apopka High			\$ 523,736	\$ -	\$ -	\$ -	\$ -	\$ -	
	Brookshire ES			\$ 1,088	\$ -	\$ -	\$ -	\$ -	\$ -	
	Columbia Elementary			\$ 403,330	\$ -	\$ -	\$ -	\$ -	\$ -	
	Cypress Springs ES			\$ 9,146	\$ -	\$ -	\$ -	\$ -	\$ -	
	Dover Shores ES			\$ 4,417	\$ -	\$ -	\$ -	\$ -	\$ -	
	Edgewater High			\$ 698,939	\$ -	\$ -	\$ -	\$ -	\$ -	
	Evans High Expansion			\$ 20,245,005	\$ -	\$ -	\$ -	\$ -	\$ -	
	Gotha Middle			\$ 69,302	\$ -	\$ -	\$ -	\$ -	\$ -	
	Horizon HS			\$ 1,200	\$ -	\$ -	\$ -	\$ -	\$ -	
	Kelly Park School			\$ 2,845	\$ -	\$ -	\$ -	\$ -	\$ -	
	Lake Como School			\$ 12,468	\$ -	\$ -	\$ -	\$ -	\$ -	
	Lake Weston ES			\$ 65,628	\$ -	\$ -	\$ -	\$ -	\$ -	
	Lovell ES			\$ 22,015	\$ -	\$ -	\$ -	\$ -	\$ -	
	Maxey ES			\$ 2,019,251	\$ -	\$ -	\$ -	\$ -	\$ -	
	Ocoee ES			\$ 1,227,086	\$ -	\$ -	\$ -	\$ -	\$ -	
	OCPS Academic Center for Excellence			\$ 10,219,118	\$ 1,438	\$ -	\$ 1,438	\$ -	\$ -	
	Orlo Vista Elementary			\$ 177,057	\$ -	\$ -	\$ -	\$ -	\$ -	
	Pershing School			\$ 2,464,179	\$ -	\$ -	\$ -	\$ -	\$ -	
	Rock Lake ES			\$ 12,412	\$ -	\$ -	\$ -	\$ -	\$ -	
	Rolling Hills ES			\$ 159,950	\$ -	\$ -	\$ -	\$ -	\$ -	
	Walker Middle			\$ 78,249	\$ -	\$ -	\$ -	\$ -	\$ -	
	Wheatley ES			\$ 3,200	\$ -	\$ -	\$ -	\$ -	\$ -	
	Wekiva HS			\$ 4,677,247	\$ -	\$ -	\$ -	\$ -	\$ -	
	Windy Ridge K-8			\$ 2,500	\$ -	\$ -	\$ -	\$ -	\$ -	
	97-E-SE-2			\$ -	\$ 6,380	\$ -	\$ -	\$ 6,380	\$ -	
	Sub-Total/Land			\$ 43,100,256	\$ 7,818	\$ -	\$ 1,438	\$ 6,380	\$ -	
	Capital Renewal			\$ 853,661,600	\$ 64,553,500	\$ -	\$ -	\$ 64,553,500	\$ -	
	Debt 09/10 Sales Tax to QSCB			\$ 59,256,330	\$ -	\$ -	\$ -	\$ -	\$ -	

Sales Tax Referendum Projects and Expenditures/Commitments History to Date
March 7, 2024

Prt	School Name	Architect	Contractor	Fiscal Years 2003-2023 Expenditures	FY2024 Current Budget	24 Pre-Enc	24 Enc	24 Exp	Balance	Project Status
	Functional Equity			\$ -	\$ -	\$ -	\$ -	\$ -	\$ -	
	Digital Curriculum (Sales Tax Only)			\$ 170,438,692	\$ 37,934	\$ -	\$ 18,661	\$ -	\$ 19,273	
	Grand Total			\$ 3,426,414,693	\$ 958,800,148	\$ 12,970	\$ 189,837,333	\$ 130,522,119	\$ 638,427,726	

New Schools, Additions and Replacements Funded from COPS, IMPACT, CLASS SIZE, QSCB and SIT
March 7, 2024

Project History from FY2002 to Present

School Name	Project Type	Funding	Architect	Contractor	Fiscal Years 2003-2023 Expenditures	FY2024 Current Budget	24 Pre-Enc	24 Enc	24 Exp	Balance	Year Scheduled to Open	Project Status
Projects In Progress												
47-E-W-4	New School	Impact	Schenkel Shultz	Welbro Bldg Corp.	\$ 1,582,594	\$ 43,412,406	\$ 187,085	\$ 18,826,049	\$ 20,673,956	\$ 3,725,315	2024	Construction
97-E-SE-2	New School	Impact/Sales Tax	Schenkel Shultz	Welbro Bldg Corp.	\$ -	\$ 9,438,000	\$ -	\$ -	\$ -	\$ 9,438,000	2025	Design
126-E-W-4	New School	Impact	Schenkel Shultz		\$ -	\$ 500,000	\$ -	\$ -	\$ -	\$ 500,000	2026	Planning
129-M-SE-2	New School	Property tax/Impact	Schenkel Shultz	Walker & Company	\$ 11,763,206	\$ 67,669,794	\$ 196,628	\$ 36,849,355	\$ 25,309,110	\$ 5,314,701	2024	Construction
130-E-SE-2	New School	Impact	Schenkel Shultz	Walker & Company	\$ 421,070	\$ 45,200,930	\$ -	\$ 35,334,058	\$ 881,331	\$ 8,985,541	2025	Construction
Hamlin ES	New School	Impact/Local	Schenkel Shultz	Welbro Bldg Corp.	\$ 22,516,565	\$ 707,443	\$ -	\$ 34,318	\$ 32,682	\$ 640,443	2022	Close-out
Hamlin MS	New School	Impact/Local	Hunton Brady	Welbro Bldg Corp.	\$ 38,937,342	\$ 649,659	\$ -	\$ 134,206	\$ 88,549	\$ 426,904	2022	Close-out
Innovation HS	New School	tax/Impact/Sales tax	Zyscovich Architects	Core Construction	\$ 60,609,692	\$ 132,990,308	\$ -	\$ 27,855,698	\$ 84,240,418	\$ 20,894,191	2024	Construction
Kelly Park School	New School	Property tax/Local/Sales tax	Zyscovich Architects	Wharton Smith	\$ 31,392,329	\$ 1,232,671	\$ -	\$ 30,210	\$ (6,637)	\$ 1,209,099	2022	Close-out
Panther Lake ES	New School	Property Tax	BRPH	Williams	\$ 26,550,838	\$ 1,209,162	\$ -	\$ 46,105	\$ 183,181	\$ 979,876	2022	Close-out
Stonewyck ES	New School	Impact/Local	Zyscovich	Pirtle Construction	\$ 25,097,051	\$ 528,949	\$ -	\$ 37,814	\$ 12,006	\$ 479,129	2022	Close-out
Water Spring MS	New School	Impact	Harvard Jolly	Core Construction	\$ 43,747,657	\$ 6,732,342	\$ -	\$ 1,400,179	\$ 4,032,482	\$ 1,299,681	2023	Close-out
Site Acquisition and Related Costs for Projects in Progress												
47-E-W-4	New School	Impact	Schenkel Shultz	Welbro Bldg Corp.	\$ 2,338	\$ -	\$ -	\$ -	\$ -	\$ -	2024	Construction
Innovation HS	New School	tax/Impact/Sales tax	Zyscovich Architects	Core Construction	\$ 2,393	\$ -	\$ -	\$ -	\$ -	\$ -	2024	Construction
97-E-SE-2	New School	Impact/Sales Tax	Schenkel Shultz	Welbro Bldg Corp.	\$ 8,835	\$ -	\$ -	\$ -	\$ -	\$ -	2025	Design
Kelly Park School	New School	Property tax/Local/Sales tax	Zyscovich Architects	Wharton Smith	\$ 2,085	\$ -	\$ -	\$ -	\$ -	\$ -	2022	Close-out
Hamlin ES	New School	Impact/Local	Schenkel Shultz	Welbro Bldg Corp.	\$ 2,401	\$ -	\$ -	\$ -	\$ -	\$ -	2022	Close-out
Water Spring MS	New School	Impact	Harvard Jolly	Core Construction	\$ 28	\$ -	\$ -	\$ -	\$ -	\$ -	2023	Close-out
Completed Projects												
Andover ES	New School	05 COPS/Impact/Local	Schenkel Shultz	Walker & Co.	\$ 13,610,509	\$ -	\$ -	\$ -	\$ -	\$ -	2005	

New Schools, Additions and Replacements Funded from COPS, IMPACT, CLASS SIZE, QSCB and SIT
March 7, 2024

Project History from FY2002 to Present

School Name	Project Type	Funding	Architect	Contractor	Fiscal Years 2003-2023 Expenditures	FY2024 Current Budget	24 Pre-Enc	24 Enc	24 Exp	Balance	Year Scheduled to Open	Project Status
Apopka ES Addn	Addition	SIT	McCree/Design	McCree	\$ 5,008,744	\$ -	\$ -	\$ -	\$ -	\$ -	2007	
Apopka HS	Replace.	07COPS	Schenkel Shultz	Skanska/JCB	\$ 86,969,212	\$ -	\$ -	\$ -	\$ -	\$ -	2010	
Arbor Ridge	Compreh	2010 QSCB/Sales Tax	Schenkel Shultz	Mills Gilbaine	\$ 12,118,553	\$ -	\$ -	\$ -	\$ -	\$ -	2014	
Audubon Park School	New School	Impact/Local	Baker Barrios	Welbro Bldg Corp.	\$ 38,529,619	\$ 323,381	\$ -	\$ 42,321	\$ -	\$ 281,060	2018	
Avalon Center for Technical Excellence	New School	07 COPS	Reynolds, Smith and Hills	Avalon Park Foundation	\$ 16,439,424	\$ -	\$ -	\$ -	\$ -	\$ -	2007	
Avalon MS	New School	Class Size	Developer/jBeat	Williams Constr.	\$ 31,051,638	\$ -	\$ -	\$ -	\$ -	\$ -	2006	
Baldwin Park ES	New School	07 COPS	Schenkel Shultz	Balfour Beatty	\$ 16,246,507	\$ -	\$ -	\$ -	\$ -	\$ -	2007	
Bay Lake ES	New School	Impact	Schenkel Shultz	Pirtle Construction	\$ 17,916,142	\$ -	\$ -	\$ -	\$ -	\$ -	2016	
Bridgewater MS	New School	Impact	Schenkel Shultz	Skanska/JCB	\$ 32,320,222	\$ -	\$ -	\$ -	\$ -	\$ -	2007	
Castle Creek ES	New School	06 COPS	Schenkel Shultz	PPI/ACE	\$ 17,110,375	\$ -	\$ -	\$ -	\$ -	\$ -	2006	
Castlevue ES	New School	Impact	BRPH	CPPI	\$ 21,802,806	\$ 627,194	\$ -	\$ 434,346	\$ -	\$ 192,848	2019	
Chickasaw ES	Addition	Class Size	Design Build	McCree	\$ 5,137,135	\$ -	\$ -	\$ -	\$ -	\$ -	2007	
Cypress Creek HS	Compreh	Local Sources	C.T Hsu	Wharton Smith	\$ 172,407	\$ -	\$ -	\$ -	\$ -	\$ -	2016	
Deerwood ES	Compreh	Local Sources	Schenkel Shultz	Pirtle Construction	\$ 22,500	\$ -	\$ -	\$ -	\$ -	\$ -	2019	
Eagle Creek ES	New School	Impact/Local	Schenkel Shultz	Clancy & Theys	\$ 14,207,974	\$ -	\$ -	\$ -	\$ -	\$ -	2015	
Eagles Nest ES	New School	Impact	Schenkel Shultz	Construct Two	\$ 12,080,858	\$ -	\$ -	\$ -	\$ -	\$ -	2004	
East Lake ES	New School	02 COPS	Schenkel Shultz	PPI Constr Mgmt	\$ 14,051,480	\$ -	\$ -	\$ -	\$ -	\$ -	2005	
East River HS	New School	07 COPS	Schenkel Shultz	J.A Cummings	\$ 79,017,222	\$ -	\$ -	\$ -	\$ -	\$ -	2009	
Eccleston ES	Compreh	2010 QSCB	Rhodes and Brito	Williams Company	\$ 10,538,094	\$ -	\$ -	\$ -	\$ -	\$ -	2014	
Edgewater HS	Compreh	09 COPS/CIT	C.T. Hsu	WG Mills	\$ 88,628,285	\$ -	\$ -	\$ -	\$ -	\$ -	2011	
Forsyth Woods ES	New School	Impact/Class Size	Schenkel Shultz	Construct Two	\$ 16,824,919	\$ -	\$ -	\$ -	\$ -	\$ -	2010	
Freedom MS	New School	Impact	Schenkel Shultz	PPI/ACE	\$ 31,723,095	\$ -	\$ -	\$ -	\$ -	\$ -	2005	
Gotha MS	Compreh	SIT	Vitetta	McCree/Williams	\$ 1,990,577	\$ -	\$ -	\$ -	\$ -	\$ -	2010	
Horizon HS	New School	Impact/Sales Tax/Local	Schenkel Shultz	Wharton Smith	\$ 38,710,574	\$ 450,264	\$ -	\$ 338,581	\$ 20,546	\$ 91,136	2021	Close-out
Horizon West MS	New School	Impact/Local	Harvard Jolly	Wharton Smith	\$ 35,397,449	\$ 806,634	\$ -	\$ 566,741	\$ 20,620	\$ 219,273	2019	
Hungerford ES	Compreh	General Fund	Schenkel Shultz	Gilbane Building/Johnson Laux	\$ 181,085	\$ -	\$ -	\$ -	\$ -	\$ -	2019/2023	Complete/Construction (Building 8)
Hunter's Creek ES	Compreh	99 & 02COPS	BRPH	PPI Constr Mgmt	\$ 12,683,243	\$ -	\$ -	\$ -	\$ -	\$ -	2010	
Independence ES	New School	Impact	Schenkel Shultz	Clancy & Theys	\$ 14,090,204	\$ -	\$ -	\$ -	\$ -	\$ -	2015	
Innovation Park MS	New School	Impact	Harvard Jolly	Wharton Smith	\$ 40,649,098	\$ 225,084	\$ -	\$ 5,280	\$ -	\$ 219,805	2017	
Keene's Crossing ES	New School	Impact/Class Size/Local	Schenkel Shultz	Clancy & Theys	\$ 16,371,268	\$ -	\$ -	\$ -	\$ -	\$ -	2009	
Lake Buena Vista HS	New School	Impact/Property Tax/Local	Schenkel Shultz	Pirtle Construction	\$ 115,164,638	\$ 2,381,399	\$ -	\$ 517,473	\$ 386,101	\$ 1,477,825	2021	
Lake Nona MS	New School	Impact	BRPH	Clark Constr	\$ 24,322,551	\$ -	\$ -	\$ -	\$ -	\$ -	2011	
Lake Nona HS	New School	Impact	Schenkel Shultz	Doster	\$ 75,006,689	\$ -	\$ -	\$ -	\$ -	\$ -	2009	
Laureate Park ES	New School	Impact	Schenkel Shultz	Morganti Group	\$ 19,600,253	\$ 428,530	\$ -	\$ 17,244	\$ -	\$ 411,286	2017	
Legacy MS	New School	Impact	Schenkel Shultz	Walker & Co.	\$ 23,293,106	\$ -	\$ -	\$ -	\$ -	\$ -	2005	

New Schools, Additions and Replacements Funded from COPS, IMPACT, CLASS SIZE, QSCB and SIT
March 7, 2024

Project History from FY2002 to Present

School Name	Project Type	Funding	Architect	Contractor	Fiscal Years 2003-2023 Expenditures	FY2024 Current Budget	24 Pre-Enc	24 Enc	24 Exp	Balance	Year Scheduled to Open	Project Status
Lockhart MS	Addition	Class Size			\$ 3,448,916	\$ -	\$ -	\$ -	\$ -	\$ -	2009	
Maxey ES	Replacement	Local Sources	Schenkel Shultz	Clancy & Theys	\$ 29,496	\$ -	\$ -	\$ -	\$ -	\$ -	2018	
Memorial MS	Replace.	COPS	Schenkel Shultz	Balfour Beatty	\$ 35,409,829	\$ -	\$ -	\$ -	\$ -	\$ -	2008	
Metro West ES	Compreh	99COPS/Sales Tax	Starmer Ranaldi	Morganti Group	\$ 645,103	\$ -	\$ -	\$ -	\$ -	\$ -	2010	
Millennia ES	New School	05 COPS/Impact	Schenkel Shultz	Welbro Bldg Corp.	\$ 17,431,745	\$ -	\$ -	\$ -	\$ -	\$ -	2006	
Millenia Gardens ES	New School	Impact	Rhodes and Brito	Wharton Smith	\$ 21,164,340	\$ -	\$ -	\$ -	\$ -	\$ -	2016	
Moss Park ES	New School	06COPS	Schenkel Shultz	Welbro Bldg Corp.	\$ 17,008,339	\$ -	\$ -	\$ -	\$ -	\$ -	2007	
Oakridge HS	Compreh	09COPS	Schenkel Shultz	Wharton Smith	\$ 74,840,139	\$ -	\$ -	\$ -	\$ -	\$ -	2014	
Ocoee HS	New School	Impact	Schenkel Shultz	Centex Rooney	\$ 49,558,310	\$ -	\$ -	\$ -	\$ -	\$ -	2005	
OCPS Academic Center for Excellence	New School	Local Sources	Baker Barrios	Williams Company	\$ 4,232,472	\$ -	\$ -	\$ -	\$ -	\$ -	2017	
Olympia HS Addn	Addition	Class Size	Design Build	McCree	\$ 6,260,861	\$ -	\$ -	\$ -	\$ -	\$ -	2007	
Prairie Lakes ES	New School	Impact Fees	Schenkel Shultz	Walker & Co.	\$ 16,162,349	\$ -	\$ -	\$ -	\$ -	\$ -	2013	
Riverside ES Addn	Addition	SIT/Class Size	Design Build	McCree	\$ 5,601,837	\$ -	\$ -	\$ -	\$ -	\$ -	2007	
Sand Lake ES	New School	Class Size/Impact	Schenkel Shultz	Skanska/JCB	\$ 17,953,722	\$ -	\$ -	\$ -	\$ -	\$ -	2006	
Shingle Creek ES	Compreh	09COPS	Schenkel Shultz	Walbridge	\$ 14,119,313	\$ -	\$ -	\$ -	\$ -	\$ -	2014	
South Creek MS	New School	05 COPS	Schenkel Shultz	J.A Cummings	\$ 27,565,247	\$ -	\$ -	\$ -	\$ -	\$ -	2006	
Southwest MS	Compreh	Local Sources	C.T Hsu	Walker & Company	\$ 176,152	\$ -	\$ -	\$ -	\$ -	\$ -	2020	
Stone Lakes ES	New School	Impact/07COPS	Developer/Beat Kahli	Avalon Park Foundation	\$ 18,286,986	\$ -	\$ -	\$ -	\$ -	\$ -	2006	
Summerlake ES	New School	Impact/Local	Rhodes & Brito	OHL	\$ 21,759,063	\$ 398,938	\$ -	\$ 385,755	\$ (47,850)	\$ 61,033	2020	
Sun Blaze	New School	Impact/QSCB 2010	Schenkel Shultz	Welbro Bldg Corp.	\$ 16,906,108	\$ -	\$ -	\$ -	\$ -	\$ -	2013	
Sunridge ES	New School	07 COPS/Impact	Schenkel Shultz	James Pirtle	\$ 13,771,314	\$ -	\$ -	\$ -	\$ -	\$ -	2012	
Sunridge MS	New School	07 COPS/Impact	Schenkel Shultz	James Pirtle	\$ 28,912,542	\$ -	\$ -	\$ -	\$ -	\$ -	2012	
Sunset Park ES	New School	06 COPS	Schenkel Shultz	Charles Perry Construction	\$ 14,952,006	\$ -	\$ -	\$ -	\$ -	\$ -	2007	
Sunshine ES	New School	Impact/ Sales tax/Local	Rhodes & Brito	Core Construction	\$ 30,354,003	\$ 873,551	\$ -	\$ 35,562	\$ 3,300	\$ 834,690	2020	
Timber Lakes ES	New School	Impact	Reynolds, Smith and Hills	Walker & Co.	\$ 16,175,955	\$ -	\$ -	\$ -	\$ -	\$ -	2008	
Timber Springs MS	New School	Impact	Hunton Brady	Pirtle Construction	\$ 37,333,456	\$ 799,052	\$ -	\$ 32,825	\$ 7,980	\$ 758,246	2017	
Union Park MS	Compreh	04 COPS	McCree/Design Build	McCree	\$ 11,407,542	\$ -	\$ -	\$ -	\$ -	\$ -		
Vista Lakes ES	New School	06 COPS	Schenkel Shultz	PSA Constructors	\$ 14,841,783	\$ -	\$ -	\$ -	\$ -	\$ -	2006	
Vista Pointe ES	New School	Impact	Rhodes & Brito	CPPI	\$ 31,751,241	\$ 731,992	\$ -	\$ 23,872	\$ -	\$ 708,120	2020	
Walker MS	Compreh	2009 QSCB	Rhodes & Brito	Walker & Co.	\$ 25,279,279	\$ -	\$ -	\$ -	\$ -	\$ -	2012	
Water Spring ES	New School	Impact/Local	Schenkel Shultz	Welbro Bldg Corp.	\$ 41,857,270	\$ 569,817	\$ -	\$ 453,029	\$ 17,459	\$ 99,329	2019	
Wedgfield School	New School	Impact	Zyscovich	Pirtle Construction	\$ 33,598,192	\$ -	\$ -	\$ -	\$ -	\$ -	2016	
Westbrooke ES	New School	Class Size	Schenkel Shultz	Construct Two	\$ 17,063,803	\$ -	\$ -	\$ -	\$ -	\$ -	2008	

New Schools, Additions and Replacements Funded from COPS, IMPACT, CLASS SIZE, QSCB and SIT

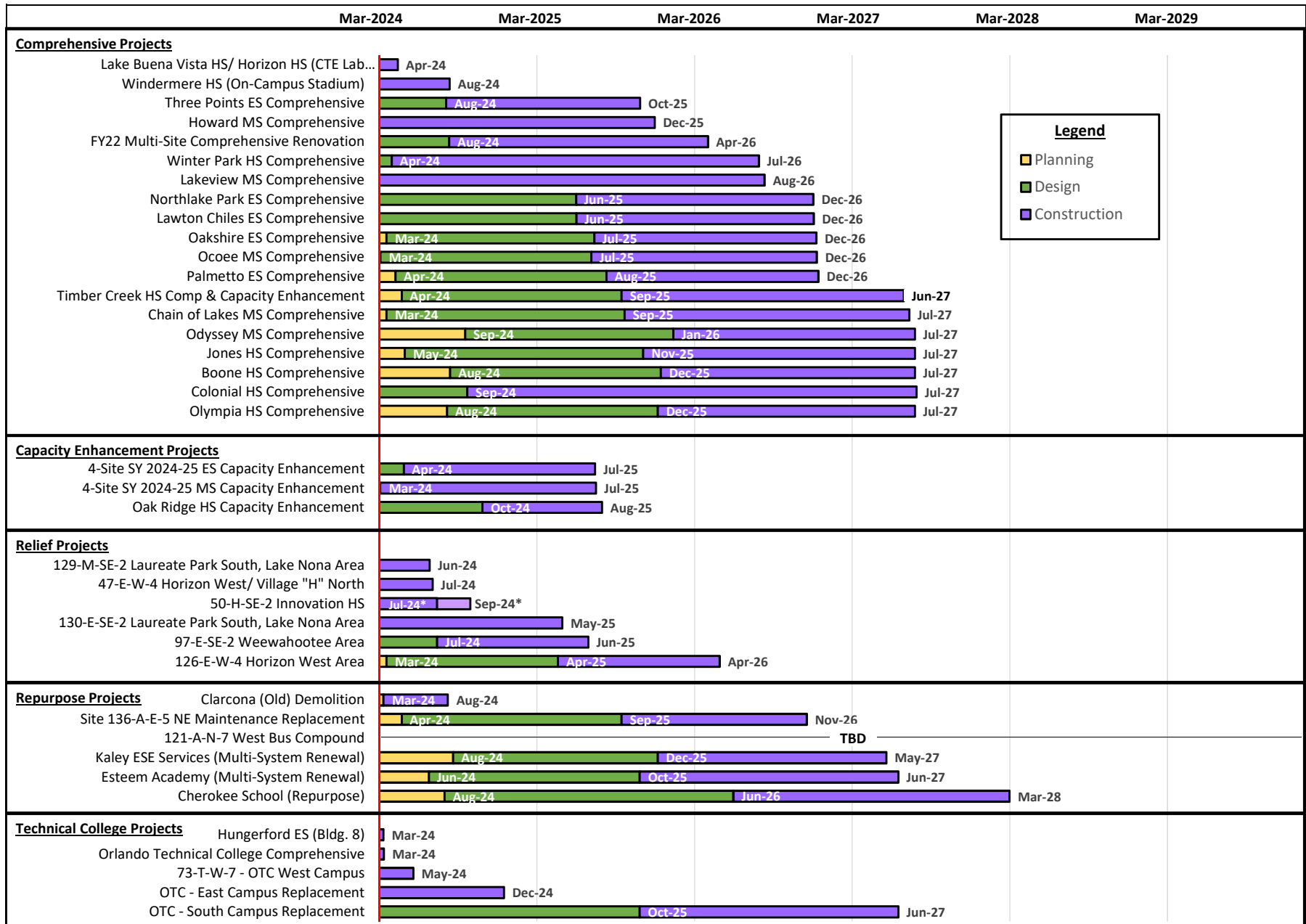
March 7, 2024

Project History from FY2002 to Present

School Name	Project Type	Funding	Architect	Contractor	Fiscal Years 2003-2023 Expenditures	FY2024 Current Budget	24 Pre-Enc	24 Enc	24 Exp	Balance	Year Scheduled to Open	Project Status
Westridge MS	Compreh	2009 QSCB	Zyscovich	PPI Constr Mgmt	\$ 10,282,318	\$ -	\$ -	\$ -	\$ -	\$ -	2014	
West Creek ES	New School	02 COPS	Schenkel Shultz	Centex Rooney	\$ 11,703,254	\$ -	\$ -	\$ -	\$ -	\$ -	2004	
West Oak ES	New School	SIT/Impact	Schenkel Shultz	PPI Constr Mgmt	\$ 12,214,770	\$ -	\$ -	\$ -	\$ -	\$ -	2004	
West Orange HS	Replace.	06COPS	Schenkel Shultz	Clark Construction	\$ 81,005,614	\$ -	\$ -	\$ -	\$ -	\$ -	2009	
Westpointe ES	New School	Impact	Harvard Jolly	Gilbane	\$ 19,084,513	\$ -	\$ -	\$ -	\$ -	\$ -	2017	
Wetherbee ES	New School	Impact	BRPH	Skanska/JCB	\$ 14,360,232	\$ -	\$ -	\$ -	\$ -	\$ -	2011	
Whispering Oak ES	New School	02COPS	Schenkel Shultz	Hunt Gomez Construction	\$ 13,444,400	\$ -	\$ -	\$ -	\$ -	\$ -	2005	
Windermere ES	Compreh	04 COPS/Local	McCree/Design Build	McCree	\$ 3,249,121	\$ 2,251,771	\$ -	\$ 51,473	\$ -	\$ 2,200,298	2008	
Windermere HS	New School	Impact/Local	Schenkel Shultz	Wharton Smith	\$ 85,816,376		\$ -		\$ -	\$ -	2017	
Winegard ES	Compreh	CIT/Local/PECO Construction	McCree/Design Build	McCree	\$ 5,263,447	\$ -	\$ -	\$ -	\$ -	\$ -	2012	
Wolf Lake ES	New School	06 COPS	Schenkel Shultz	J.A Cummings	\$ 14,850,299	\$ -	\$ -	\$ -	\$ -	\$ -	2006	
Wolf Lake MS	New School	Class Size	Schenkel Shultz	J.A Cummings	\$ 28,625,324	\$ -	\$ -	\$ -	\$ -	\$ -	2006	
Wyndam Lakes ES	New School	06 COPS	Schenkel Shultz	Skanska/JCB	\$ 15,374,178	\$ -	\$ -	\$ -	\$ -	\$ -	2006	
					\$ -							

MASTER SCHEDULE UPDATE

Capital Program Schedule Summary



PROJECT BUDGET UPDATE



**PROJECT STATUS SUMMARY REPORT
NEW AND REPLACEMENT SCHOOLS
March 21, 2024**

Funding Source(s)	Priority #	School Name	F1	F2	F3	Estimated Cost At Completion	Variance	GMP Amount	F4		F5		Approved Construction		F6 Number of Days Past Substantial (Close-out)	Contract Type	CM / GC Firm	AE Firm	
			FY 2024 Board Adopted Budget	Changes from FY 2024 Adopted Budget	Current Board Adopted Budget				Construction Change Orders	ODP Change Orders	NTP Construct	Contract Subst. Com	Amount	#					Deducts
			Budget													Schedule		Contracting	
PLANNING PHASE																			
Impact	New	Site 126-E-W-4	45,535,000	-	45,535,000	45,535,000	-												
CIT	New	Site 136-A-E-5 (NE Maint Repl)	20,000,000	-	20,000,000	20,000,000	-												
		Sub Total	65,535,000	-	65,535,000	65,535,000	-												
DESIGN PHASE																			
ST, Impact	New	Site 97-E-SE-2	45,622,000	-	45,622,000	45,622,000	-										Welbro	Schenkel	
CIT	New	Site 121-A-W-7 (West Bus Compound)	43,205,000	-	43,205,000	43,205,000	-										Pirtle	Spiezle	
		Sub Total	88,827,000	-	88,827,000	88,827,000	-												
CONSTRUCTION PHASE																			
Impact	New	Site 47-E-W-4	44,995,000	-	44,995,000	44,995,000	-	36,973,822	276,856	1	(9,822,963)	2	7/12/2023	7/5/2024		GMP	Welbro	Schenkel	
Sales Tax	New	Hungerford ES (renov Bldg 8)	6,720,000	-	6,720,000	6,720,000	-	3,836,726	-		(631,727)	1	11/11/2022	1/15/2024		GMP	Johnson Laux	Schenkel	
ST, Impact, CIT	New	Innovation HS (Site 50-H-SE-2)	230,000,000	-	230,000,000	230,000,000	-	198,036,960	341,167	13	(40,065,836)	6	8/29/2022	9/30/2024		GMP	CORE	Zyscovich	
Sales Tax	134	Site 73-T-W-7 (OTC West Campus)	64,805,000	-	64,805,000	64,805,000	-	48,931,894	759,141	2	(12,235,000)	2	8/26/2022	3/5/2024		GMP	Wharton	DLR Group	
CIT, Impact	New	Site 129-M-SE-2	79,433,000	-	79,433,000	79,433,000	-	68,597,308	346,558	4	(17,690,998)	2	2/23/2023	6/28/2024		GMP	Walker	Schenkel	
Impact	New	Site 130-E-SE-2	45,622,000	-	45,622,000	45,622,000	-	35,154,654	-		-	-	12/20/2023	05/01/2025		GMP	Wharton	Schenkel	
Sales Tax	135	Site 512-T-E-1 (OTC East Campus)	63,994,000	-	63,994,000	63,994,000	-	50,325,542	-		(10,973,569)	1	6/1/2023	12/17/2024		GMP	CPPI	DLR Group	
		Sub Total	535,569,000	-	535,569,000	535,569,000	-	441,856,907	1,723,722	20	(91,420,094)	14							
CLOSE OUT PHASE														Actual					
Impact	New	Water Spring MS (Site 65-M-W-4)	50,480,000	-	50,480,000	50,480,000	-	42,828,832	(43,565)	1	(15,398,679)	4	11/15/2021	8/1/2023	233	GMP	CORE	Harvard Jolly	
		Sub Total	50,480,000	-	50,480,000	50,480,000	-	42,828,832	(43,565)	1	(15,398,679)	4							
Grand Total			740,411,000	-	740,411,000	740,411,000	-	484,685,739	1,680,157	21	(106,818,773)	18							

Footnotes

- F1 - Reflects the amount from the 10 yr Capital Budget dated September 13, 2023.
- F2 - Reflects changes to the FY 2024 adopted budget.
- F3 - Amount comprised of prior year expenditures, current and future planned funding (Adopted Summary Budget FY 2024). There are no land costs included.
- F4 - Reflects number of change orders and cumulative change order amount. Does not include ODP deductive and reconciliation change orders.
- F5 - Reflects the amount and number of ODP deductive and reconciliation change orders to date.
- F6 - Reflects number of days beyond substantial completion. See justification below under Close Out Delays.

Other

Completion Delays

Hungerford ES (renov Bldg 8) - CM's request for time extension is currently being reviewed.

Projects Closed Since Last Report

None

Final Budget Variance

Final ODP %

Close Out Delays

Water Spring MS (Site 65-M-W-4) - Completion of closeout deliverables and reconciliation of final project costs. Projected date of closeout is March 2024.



PROJECT STATUS SUMMARY REPORT

COMPREHENSIVE SCHOOLS

March 21, 2024

Funding Source	Priority #	School Name	F1 FY 2024 Board Adopted Budget	F2 Changes from FY 2024 Adopted Budget	F3 Current Board Adopted Budget	Estimated Cost At Completion	Variance	GMP Amount	F4 Construction Change Orders		F5 ODP Change Orders		Approved Construction		F6 Number of Days Past Substantial (Close-out)	Contract Type	CM / GC Firm	AE Firm
									Amount	#	Deducts	#	NTP Construct	Contract Subst. Com Schedule				
Budget																		
PLANNING PHASE																		
Sales Tax		Boone HS	79,589,000	-	79,589,000	79,589,000	-											
Sales Tax		Chain of Lakes MS	52,200,000	-	52,200,000	52,200,000	-											
CIT		Clarcona (Old) Demolition	1,277,000	-	1,277,000	1,277,000	-											
CIT		Cherokee School (Repurpose)	67,000,000	-	67,000,000	67,000,000	-											
CIT		Esteem Academy (Repurpose)	50,122,000	-	50,122,000	50,122,000	-											
Sales Tax		Jones HS	61,026,000	-	61,026,000	61,026,000	-											
CIT		Kaley ESE Services (Repurpose)	20,198,000	-	20,198,000	20,198,000	-											
Sales Tax		Oakshire ES	27,500,000	-	27,500,000	27,500,000	-											
Sales Tax		Ocoee MS	60,564,000	-	60,564,000	60,564,000	-											
Sales Tax		Odyssey MS	47,733,000	-	47,733,000	47,733,000	-											
Sales Tax		Olympia HS	98,682,000	-	98,682,000	98,682,000	-											
Sales Tax		Palmetto ES	40,500,000	-	40,500,000	40,500,000	-											
Sales Tax, CIT		Timber Creek HS (Comprehensive & Capacity Enhancement)	129,335,000	-	129,335,000	129,335,000	-											
		Sub Total	735,726,000	-	\$735,726,000	735,726,000	-											
DESIGN PHASE																		
Sales Tax		Colonial HS	97,655,000	-	97,655,000	97,655,000	-										Wharton	Schenkel
Sales Tax		FY22 Multi-Site Comprehensive Reno	96,624,000	-	96,624,000	96,624,000	-										Wharton	Zyscovich
Sales Tax		Lawton Chiles ES	32,100,000	-	32,100,000	32,100,000	-										Lego	Little
Sales Tax		Northlake Park ES	44,550,000	-	44,550,000	44,550,000	-										Welbro	BRPH
Sales Tax		Oak Ridge HS Functional Equity	20,750,000	-	20,750,000	20,750,000	-										Welbro	Zyscovich
Sales Tax	133	OTC South Campus	197,000,000	-	197,000,000	197,000,000	-										Williams	Harvard Jolly
Sales Tax		SY 2024 -25 ES Functional Equity	34,109,000	-	34,109,000	34,109,000	-										McCree	C.T. Hsu
Sales Tax		SY 2024 -25 MS Functional Equity	46,567,000	-	46,567,000	46,567,000	-										Thorton	Little
Sales Tax		Three Points ES	22,825,000	-	22,825,000	22,825,000	-										Core	C.T. Hsu
Sales Tax		Winter Park HS	90,903,000	-	90,903,000	90,903,000	-										CPPI	C.T. Hsu
		Sub Total	683,083,000	-	683,083,000	683,083,000	-											
CONSTRUCTION PHASE																		
Sales Tax		Howard MS	60,831,000	-	60,831,000	60,831,000	-	45,106,554		(10,662,670)	1	6/12/2023	12/1/2025		GMP	Lego	Rhodes + Brito	
Sales Tax	136	Orange Technical College	47,020,000	-	47,020,000	47,020,000	-	35,352,358	375,135	(5,932,626)	1	3/24/2022	12/11/2023		GMP	Gilbane	Harvard Jolly	
LBV-Impact, CIT; Horizon-Impact, Sales Tax		Lake Buena Vista HS/ Horizon HS (CTE Lab Conversions & Misc.)	3,476,000	-	3,476,000	3,476,000	-	1,236,791	53,000	(131,608)	1	3/16/2023	4/15/2024		GMP	Wharton	Schenkel	
Sales Tax		Lakeview MS	48,891,000	-	48,891,000	48,891,000	-	36,395,080	-	-	-	11/29/2023	8/12/2026		GMP	Wharton	Song + Assoc.	
Sales Tax		Windermere HS (On-Campus Stadium)	6,800,000	-	6,800,000	6,800,000	-	4,615,828	-	-	-	2/7/2024	8/13/2024		GMP	Wharton	Schenkel	
		Sub Total	167,018,000	-	167,018,000	167,018,000	-	122,706,611	428,135	(16,726,904)	3							
CLOSE OUT PHASE																		
		Sub Total	-	-	-	-	-	-	-	-	-	-	-	-	-	-	-	-
Grand Total			1,585,827,000	-	1,585,827,000	1,585,827,000	-	122,706,611	428,135	4	(16,726,904)	3						

Footnotes

- F1 - Reflects the amount from the 10 yr Capital Budget dated September 13, 2023.
- F2 - Reflects changes to the FY 2024 adopted budget.
- F3 - Amount comprised of prior year expenditures, current and future planned funding (Adopted Summary Budget FY 2024). There are no land costs included.
- F4 - Reflects number of change orders and cumulative change order amount. Does not include ODP deductive and reconciliation change orders.
- F5 - Reflects the amount and number of ODP deductive and reconciliation change orders to date.
- F6 - Reflects number of days beyond substantial completion. See justification below under Close Out Delays.

Multiple Sites Projects

- SY 2024-25 MS Functional Equity includes improvements at 3 sites: College Park MS, Hunters Creek MS, and Westridge MS
- SY 2024-25 ES Functional Equity includes improvements at 3 sites: Dr. Phillips ES, Hunters Creek ES, and Whispering Oak ES.
- FY22 Multi-Site Comprehensive Renovation includes improvements at 4 sites: Avalon ES, Camelot ES, Citrus ES, and Endeavor ES.

Completion Delays

Orange Technical College - CM's request for time extension is currently being reviewed.

Close Out Delays

None

Projects Closed Since Last Report

None

Final Budget Variance

Final ODP %



Project Status Summary Report

Capital Renewal Projects (Note 1)

March 21, 2024

Project Size Key
 Lg - Constr. Amount > \$2M
 Int - Constr. Amount > \$280K and < \$2M
 Sm - Constr. Amount < \$280K

Location	Wt'd Age (FISH)	Project Number	Size	Project Elements											Prior Project Budget	Project Budget Changes	Current Project Budget	Current Estimated Cost At Completion	Variance from Current Project Budget	GMP Amount	Construction Change Orders		ODP Change Orders		Approved Construction		Number of Days Past Subst. Compl. (close-out)	Contract Type	CM / GC Firm	AE Firm			
				Site	Roofing	Structural	Exterior	Interior	Mechanical	Electrical	Plumbing	Life Safety	Technology	Conveyance							Specialties	Amount	#	Deducts	#	NTP Construct					Contract Subst. Compl. Schedule		
PLANNING PHASE																																	
Audubon Park School	7-Yr	N0211.0	Int															-	604,000	604,000	604,000	-											
Discovery MS	28-Yr	N0192.0	Lg		✓												4,719,000	-	4,719,000	4,719,000	-												
Dr Phillips HS	12-Yr	N0188.0	Int	✓			✓										2,223,000	-	2,223,000	2,223,000	-												
Hillcrest ES	7-Yr	N0199.0	Int		✓												390,000	-	390,000	390,000	-												
FY23 Multi-Site Exterior Painting	-	N0176.0	Int				✓										2,088,000	-	2,088,000	2,088,000	-												
FY24 Multi-Site CCTV Replacement (Exerr	-	N0204.0	Lg								✓		✓				6,281,000	-	6,281,000	6,281,000	-												
FY24 Multi-Site Chiller R'newal	-	N0206.0	Int							✓	✓	✓					1,726,000	-	1,726,000	1,726,000	-												
FY24 Multi-Site Intrusion Detection (Grp 1)	-	N0196.0	Int														1,008,000	-	1,008,000	1,008,000	-												
FY24 Multi-Site Cooling Tower Refurb	-	N0210.0	Lg	✓							✓						-	3,315,000	3,315,000	3,315,000	-												
FY24 Multi-Site Intrusion Detection Grp 2	-	N0203.0	Lg								✓						2,256,000	-	2,256,000	2,256,000	-												
FY24 Multi-Site Low Voltage BAS Controls	-	N0207.0	Lg								✓	✓	✓				4,157,000	-	4,157,000	4,157,000	-												
Oak Ridge HS	13-Yr	N0197.0	Int								✓	✓	✓				1,109,000	-	1,109,000	1,109,000	-												
Orlo Vista ES	20-Yr	N0205.0	Sm				✓										106,000	-	106,000	106,000	-												
Metrowest ES	12-Yr	N0182.0	Int								✓						567,658	-	567,658	567,658	-												
Riverside ES	9-Yr	N0195.0	Sm								✓	✓	✓				430,000	-	430,000	430,000	-												
Rosemont ES	24-Yr	N0090.2	Int	✓			✓										352,352	-	352,352	352,352	-												
West Orange HS	16-Yr	N0194.0	Int	✓													1,100,000	-	1,100,000	1,100,000	-												
SUBTOTAL (Planning)		17 Projects	74 Sites														28,513,010	3,919,000	32,432,010	32,432,010	-												
DESIGN / PRE-CONSTRUCTION PHASE																																	
Apopka HS	16-Yr	N0136.0	Lg	✓	✓		✓				✓	✓	✓				19,292,000	-	19,292,000	19,292,000	-											Bishop Construction	RGD
FY22 LED Conversion Pilot at 03-Sites	-	N0159.0	Int									✓					4,415,000	-	4,415,000	4,415,000	-										Schmid Construction	Voltair	
FY22 Exterior Painting Group 1	-	N0123.0	Int				✓										2,325,000	-	2,325,000	2,325,000	-										TBD	Gale	
FY22 Exterior Painting Group 2	-	N0162.0	Lg				✓										3,357,000	-	3,357,000	3,357,000	-										TBD	Gale	
HVAC at 02-Sites	-	N0125.0	Lg	✓	✓						✓	✓	✓				16,461,000	-	16,461,000	16,461,000	-										Lego Construction	GR&EF-USA	
HVAC at 02-Sites	-	N0139.0	Lg								✓	✓					22,289,000	-	22,289,000	22,289,000	-										Johnson-Laux	TLC Engineering	
HVAC at 02-Sites	-	N0140.0	Lg								✓	✓	✓				22,872,000	-	22,872,000	22,872,000	-										McCree	OCI Engineering	
HVAC at 05-Sites	-	N0105.0	Lg								✓	✓	✓				21,357,000	-	21,357,000	21,357,000	-										Lego Construction	Matern	
Lockhart MS	16-Yr	N0138.0	Lg	✓							✓	✓					6,890,000	-	6,890,000	6,890,000	-										Votum	Baker Barrios	
Dommerich ES/ Maitland MS	-	N0137.0	Lg		✓		✓				✓	✓	✓	✓	✓	✓	12,555,000	-	12,555,000	12,555,000	-										Welbro	SGM	
Lakemont ES/ Windy Ridge K8	-	N0144.0	Lg	✓		✓	✓	✓	✓	✓	✓	✓	✓	✓	✓	✓	18,799,000	-	18,799,000	18,799,000	-										Votum	SGM	
Multi-System Group 1	-	N0142.0	Lg	✓	✓		✓	✓	✓	✓	✓	✓	✓	✓	✓	✓	32,262,000	-	32,262,000	32,262,000	-										Wharton Smith	Matern	
Ocoee HS	19-Yr	N0099.0	Lg								✓	✓	✓				27,416,000	-	27,416,000	27,416,000	-										T&G Constructors	GR&EF-USA	
Piedmont Lakes MS	31-Yr	N0119.0	Lg								✓	✓	✓				17,690,000	-	17,690,000	17,690,000	-										CPPI	Bobes Associate	
Rosemont ES	24-Yr	N0090.0	Lg	✓	✓		✓				✓	✓	✓	✓	✓	✓	5,871,000	-	5,871,000	5,871,000	-										SkyBuilders USA	TLC	
Tildenville ES	20-Yr	N0131.0	Lg	✓							✓	✓	✓	✓	✓	✓	9,452,000	-	9,452,000	9,452,000	-										Johnson-Laux	OCI	
Union Park MS	18-Yr	N0132.0	Lg	✓	✓	✓					✓	✓					5,311,000	-	5,311,000	5,311,000	-										Messam	Little Diversified	
Union Park MS	18-Yr	N0191.0	Lg	✓	✓		✓										4,759,000	-	4,759,000	4,759,000	-										TBD	ARC	
Westbrooke ES	16-Yr	N0155.0	Lg								✓	✓					6,598,000	-	6,598,000	6,598,000	-										Williams	GR&EF-USA	
SUBTOTAL (Design/Pre-Con)		19 Projects	52 Sites														259,971,000	-	259,971,000	259,971,000	-												



Project Status Summary Report

Capital Renewal Projects (Note 1)

March 21, 2024

Project Size Key

Lg - Constr. Amount > \$2M
 Int - Constr. Amount > \$280K and < \$2M
 Sm - Constr. Amount < \$280K

Project Elements

Location	Wt'd Age (FISH)	Project Number	Size	Site	Roofing	Structural	Exterior	Interior	Mechanical	Electrical	Plumbing	Life Safety	Technology	Conveyance	Specialties	Prior Project Budget	Project Budget Changes	Current Project Budget	Current Estimated Cost At Completion	Variance from Current Project Budget	GMP Amount	Construction Change Orders		ODP Change Orders		Approved Construction		Number of Days Past Subst. Compl. (close-out)	Contract Type	CM / GC Firm	AE Firm
																						Amount	#	Deducts	#	NTP Construct	Contract Subst. Compl. Schedule				

Location	Project Number	Size	Explanation of Project Budget Changes
PLANNING PHASE			
Audubon Park School	N0211.0	Int	Added project
FY24 Multi-Site Cooling Tower Refurb	N0210.0	Lg	Added project

Budget

Multiple Sites Projects, with Florida Inventory of School Houses (FISH) Wt'd Age in [brackets]:

- N0101.0 consists of chiller replacement at 2 campuses: Roberto Clemente MS [20] and Lake Sybelia ES [14].
- N0102.0 consists of select roof replacement at 3 campuses: Sadler ES [38], Windermere ES [17], and Windy Ridge K8 [17].
- N0103.0 consists of select roof replacement at 2 campuses: Avalon MS [17] and Meadowbrook MS [18].
- N0105.0 consists of select HVAC replacement at 5 campuses: Castle Creek ES [17], Columbia ES [16], West Oaks ES [19], Windermere ES [17], and Wolf Lake ES [17].
- N0120.0 consists of intrusion detection, fire alarm, intercom, and/ or security camera replacement at 38 campuses: Apopka ES [10]; Baldwin Park ES [16]; Blankner K8 [22]; Bridgewater MS [16]; Dillard St ES [19]; Eagle's Nest ES [20]; East Lake ES [18]; East River HS [14]; Evans HS [13]; Freedom HS [20]; Freedom MS [18]; Killarney ES [14]; Lake Nona HS [14]; Lakeville ES [24]; Legacy MS [18]; Liberty MS [18]; Maitland MS [14]; McCoy ES [18]; Meadowbrook MS [18]; Memorial MS [15]; Ocoee HS [18]; OTC-Avalon Campus [15]; Ridgewood Park ES [17]; Riverdale ES [25]; Sadler ES [38]; Sand Lake ES [18]; South Creek MS [17]; Timber Lakes ES [15]; Union Park MS [17]; Waterbridge ES [13]; Waterford ES [15]; West Oaks ES [19]; West Orange HS [15]; Windermere ES [17]; Windy Ridge K8 [17]; Wolf Lake ES [17]; Wolf Lake MS [17]; Wyndham Lakes ES [17].
- N0123.0 consists of exterior painting at 17 campuses: Aloma ES [11]; Azalea Park ES [12]; Cypress Springs ES [12]; Forsyth Woods ES [13]; Lake Sybelia ES [14]; Lancaster ES [12]; Metrowest ES [11]; Princeton ES [12]; Rock Springs ES [12]; Sadler ES [38]; Sand Lake ES [18]; Shenandoah ES [16]; Southwood ES [26]; Sunridge ES [11]; Wetherbee ES [12]; Wyndham Lakes ES [17]; Zellwood ES [12].
- N0125.0 consists of select HVAC replacement at 2 campuses: Dillard Street ES [19] and Hiwassee ES [20].
- N0137.0 consists of multi-system improvements at 2 campuses: Dommerich ES [14] and Maitland MS [14].
- N0139.0 consists of select HVAC replacement at 2 campuses: Wekiva HS [16] and West Orange HS [15].
- N0140.0 consists of select HVAC replacement at 2 campuses: East River HS [14] and Lake Nona HS [14].
- N0142.0 consists of multi-system improvements at 5 campuses: Columbia ES [16]; Moss Park ES [16]; Stone Lakes ES [17]; Vista Lakes ES [17]; West Creek ES [19].
- N0144.0 consists of multi-system improvements at 2 campuses: Lakemont ES [15]; Windy Ridge K8 [17].
- N0147.0 consists of select HVAC replacement at 7 campuses: Baldwin Park ES [16]; Eagle's Nest ES [20]; McCoy ES [18]; Millennia ES [17]; Whispering Oak ES [18]; Wyndham Lakes ES [17].
- N0151.0 consists of chiller replacement at 4 campuses: Killarney ES [14]; Robinswood MS [15]; Timber Lakes ES [15]; Walker MS [13].
- N0158.0 consists of CCTV security cameras replacement at 18 campuses: Arbor Ridge K8 [11]; Avalon MS [17]; Castle Creek ES [17]; Catalina ES [16]; Colonial 9GC [22]; Eccleston ES [10]; Forsyth Woods ES [13]; Keene's Crossing [14]; Lake Nona MS [12]; Lancaster ES [12]; Lockhart MS [15]; Palm Lake ES [14]; Pinewood ES [26]; Princeton ES [12]; Shenandoah ES [16]; Sunridge ES [11]; Walker MS [13]; Washington Shores PLC [17].
- N0159.0 consists of LED retrofit at 3 campuses: Freedom MS [18]; Freedom HS [20]; West Creek ES [19].
- N0162.0 consists of exterior painting at 9 campuses: Acceleration East [21]; Apopka 9GC [28]; Apopka HS [15]; Edgewater HS [13]; Evans HS [13]; Hunter's Creek MS [30]; South Creek MS [17]; Sunridge MS [11]; Westridge MS [12].
- N0168.0 consists of select HVAC replacement at 3 campuses: Bonneville ES [22]; Legacy MS [18]; Washington Shores PLC [17].
- N0169.0 consists of chiller r'newal at 5 campuses: Freedom MS [18]; Meadowbrook MS [18]; Olympia HS [23]; Timber Creek HS [24]; Winter Park 9GC [13].
- N0172.0 consists of CCTV security cameras replacement at 14 campuses: Aloma ES [11]; Azalea Park ES [12]; Bonneville ES [22]; Brookshire ES [10]; Cypress Springs ES [12]; Edgewater HS [13]; Hunter's Creek ES [13]; Lake Sybelia ES [14]; Prairie Lake ES [10]; Rock Springs ES [12]; Sun Blaze ES [10]; Sunridge MS [11]; Wetherbee ES [12]; Zellwood ES [12].
- N0176.0 consists of exterior painting at 7 campuses: Arbor Ridge K8 [11]; Brookshire ES [10]; Colonial 9GC [22]; Freedom HS [20]; Freedom MS [18]; Lakeville ES [24]; Sun Blaze ES [10].
- N0180.0 consists of audio enhancement intercom improvements at 3 campuses: Lake Nona HS [14]; Millennia Gardens ES [8]; and Sadler ES [38].
- N0189.0 consists of chiller coil replacement at 3 campuses: Cypress Creek HS [9]; Dr. Phillips HS [11]; Hunter's Creek MS [30].
- N0190.0 consists of carpet replacement at 14 campuses: Blankner K8 [22]; Dillard St ES [19]; Hiwassee ES [19]; Jones HS [19]; Lakeville ES [24]; McCoy ES [18]; Metrowest ES [11]; Olympia HS [23]; Orange Center ES [14]; Roberto Clemente MS [20]; Robinswood MS [15]; Stone Lakes ES [17]; Thornbrooke ES [20]; West Oaks ES [18].
- N0196.0 consists of intrusion detection improvements at 8 campuses: Bonneville ES [23]; Colonial 9GC [23]; Corner Lake MS [27]; Discovery MS [28]; Dr Phillips HS [12]; Orlo Vista ES [20]; Southwood ES [27]; Washington Shores PLC [18].
- N0201.0 consists of intercom replacement at 3 campuses: Gotha MS [29]; Lancaster ES [12]; Lockhart MS [15].
- N0202.0 consists of youth and tot lot replacement at 12 campuses: Andover ES [19]; Blankner K8 [23]; Dilliard St ES [20]; Eagle's Nest ES [20]; East Lake ES [19]; Hiwassee ES [20]; McCoy ES [19]; Orlo Vista ES [20]; Sand Lake ES [19]; Thornbrooke ES [21]; West Creek ES [20]; and West Oaks ES [19].
- N0204.0 consists of CCTV replacement at 19 campuses
- N0203.0 consists of intrusion detection improvements at 21 campuses: Conway MS [15]; Dommerich ES [15]; East River HS [15]; Forsyth Woods ES [14]; Gotha MS [30]; Hunters Creek ES [14]; Hunters Creek MS [31]; Keene's Crossing ES [15]; Lake Nona HS [15]; Lakemont ES [16]; Maitland MS [15]; Memorial MS [16]; Millennia ES [18]; Ocoee HS [19]; Palm Lake ES [15]; Pinewood ES [27]; Positive Pathways [22]; Sunset Park ES [17]; Memorial MS [16]; Millennia ES [18]; Ocoee HS [19]; Palm Lake ES [15]; Pinewood ES [27]; Positive Pathways [22]; Sunset Park ES [17]; Timber Lakes ES [16]; Waterbridge ES [14]; Westbrooke ES [16].
- N0206.0 consists of chiller r'newals at 4 campuses: Freedom HS [21]; Glenridge MS [21]; Legacy MS [19]; and South Creek MS [18].
- N0207.0 consists of BAS improvements at 13 campuses: Aloma ES [12]; Azalea Park ES [13]; Bay Lake ES [9-]; Brookshire ES [11]; Cypress Springs ES [13]; Dream Lake ES [9-]; Lockhart ES [9-]; Mollie Ray ES [8-]; Ocoee ES [10]; Orange Center ES [15]; Palm Lake ES [15]; Pineloch ES [10]; University HS [14].
- N0210.0 consists of cooling tower refurbishment at 8 campuses: Avalon MS [18]; Bridgewater MS [17]; Freedom HS [21]; Freedom MS [19]; Legacy MS [19]; Meadow Woods MS [20]; South Creek MS [18]; Winter Park 9GC [14].



OCPS MASTER CLOSEOUT REPORT

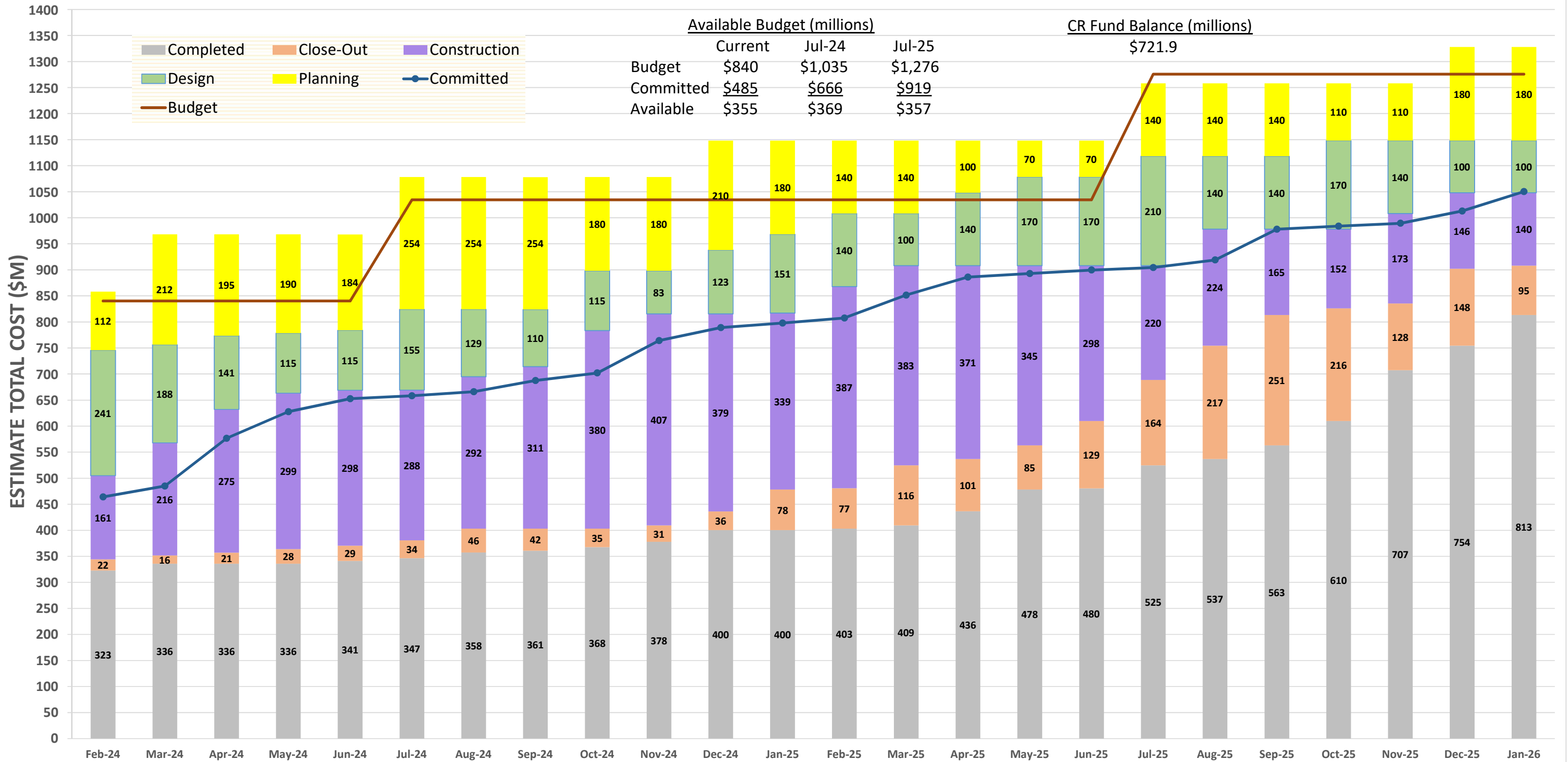
CAPITAL PROJECT

	Water Spring MS
Project Number	S-0097
Project Manager	Tamara Cox
Architect of Record	Harvard Jolly
Construction Manager	CORE
Substantial Completion	08/01/23
Closeout Complete (Exhibit H)	March '24

CLOSEOUT DELIVERABLE	
O & M Manuals	Completed
Environmental Closeout Manual	Completed
Warranty Certificates	Completed
Master Consolidated Punch List (signed-off)	Missing (4) sign-offs
Return of Items Procured w/GRs (\$75+)	Completed
As-Built Drawings	Completed
As-Built Project Manuals	Completed
Record Drawings & Project Manuals	Completed
Certificate of Substantial Completion	Completed
Certificate of Occupancy	Completed
Attic Stock	Completed
Training	Completed
Specific Easements	Completed
Sustainability Letter & Score Card	Completed
OEF 564 - Cost Breakdown Info	Completed
Final CRs & COs (excluding ODP / GMP reconciliation)	WIP
Final ODP Reconciliation Change Order	Completed
Final GMP Reconciliation Change Order	WIP
Certificate of Final Inspection (CFI)	WIP
Final Pay Application	WIP

Capital Renewal Forecast

Reporting Period: February 2024 - January 2026



PROJECT STATUS REPORT

Capital Construction Update as of March 21, 2024

We continue with eleven (11) projects under construction.

Four (4) Comprehensive Projects:

- **Orange Technical College** (Comprehensive Renovation)

Phase 2: Includes the remaining half of floors 2-5, including roofing. Anticipated for completion early February 2024.

Project Status: Floors 3, 4 and 5 are complete; working on final inspections.

The project is forecasted to be complete early March 2024.



Capital Construction Update as of March 21, 2024

- **Hungerford Building 8** (Comprehensive Renovation)

Select renovation of existing Hungerford Building 8 to convert into a welding lab/construction lab using classrooms, restrooms, and spaces for mechanical and electrical rooms. Existing metal covered play structure to be converted into outdoor welding school and added parking.

Project Status: Building 8 is complete and students are moved in. In building 9, we are progressing slowly. Work is complete other than the contactors (long lead item) and a change to the exterior security fencing.

The project is anticipated to be completed late March 2024.



Capital Construction Update as of March 21, 2024

- **Howard MS** (Comprehensive Renovation)

Notice-to-Proceed issued on June 12, 2023. Comprehensive renovation and remodeling of the entire campus to provide improved facilities meeting the design guidelines and educational program requirements. The project scope includes all renovations needed to address current deficiencies and upgrade all building and site facilities, systems, and finishes at or near the end of their useful life. The project will be completed in four phases.

Phase 1: Anticipated completion early August 2024.

Phase 2: Anticipated completion early August 2025.

Phase 3: Anticipated completion late November 2025.

Phase 4: Anticipated completion early December 2025.

Project Status: Project is on schedule. The second floor Phase 1B is underway with Low Voltage rough-in ongoing and LED light installs continuing. Ceiling grid installation is complete and finishes have commenced. Roofing is also about 60% complete including shingle work over the gym.

The project is anticipated to be completed early December 2025.



727.520.8181
www.aerophoto.com

Howard Middle School 21-CM-19

Image # 90
Date 02.07.24

Capital Construction Update as of March 21, 2024

- **Lakeview MS (Comprehensive Renovation)**

Notice-to-Proceed was issued on November 29, 2023. Comprehensive renovation and remodeling of the entire campus to provide improved facilities meeting the design guidelines and educational program requirements. The project scope includes all renovations needed to address current deficiencies and upgrade all building and site facilities, systems, and finishes at or near the end of their useful life. The scope also provides for remodeling of existing spaces to support current program, life safety and accessibility requirements and also includes any temporary facilities and classrooms required to support construction phasing.

Phase 1: Anticipated completion early September 2024.

Phase 2: Anticipated completion early February 2025.

Phase 3: Anticipated completion late September 2025.

Phase 4: Anticipated completion early August 2025.

Phase 5: Anticipated completion early July 2026.

Phase 6: Anticipated completion early August 2026.

Project Status: Building Permit was received; procurement of materials is underway. Portable install for swing space anticipated to begin April 2024.

The project is anticipated to be completed late August 2026.



Capital Construction Update as of March 21, 2024

Four (4) New Relief Projects:

- **Site 129-M-SE-2** (Laureate Park) (Greenfield school)

Project Status: Project is moving along on schedule. Site work continues with paving and curbing in the parent pick up parking lot. Courts and track are paved. All buildings are in various stages of construction with rough-out of electrical, plumbing and HVAC throughout all buildings. Drywall is also progressing in all areas following the completion of mechanical trades. Fire protection lines are nearly complete in all buildings. HVAC duct work is progressing in the gym. Finishes have begun on the third floor of the classroom building with spackling and painting. Roof membrane is 100 % complete.

The project is anticipated to be completed late June 2024.



WALKER
& COMPANY

Site 129-M-SE-2 M.S. Relief
2-20-24



aerial
Innovations

Capital Construction Update as of March 21, 2024

- **Site 47-E-W-4** (Horizon West Area) (Greenfield school)

This project includes construction of a new prototype elementary school building with classrooms, administration, art, music, kitchen, cafeteria/multi-purpose room, media center and related site work. This elementary school was designed for 830 student stations.

Project Status: Project is moving along on schedule. Site work continues with parking lot grading and play court curb work underway. Exterior washing of the building is complete and texture and paint primer has started. Interior work continues with wall framing, electrical, plumbing and HVAC rough-in work in all areas of the building. Windows are about 60% complete. Chiller piping is being connected and the electrical contractor is preparing for permanent power.

The project is anticipated to be completed in a single phase, in early July 2024.



OCPS Site 47 E-W-4
Elementary Relief School
2.21.24



Capital Construction Update as of March 21, 2024

○ **Innovation HS** (Site 50-H-SE-2) (Greenfield school)

Phase 1: Includes construction of Building 100. Anticipated completion early July 2024.

Phase 2: Includes construction of Building 200. Anticipated completion mid July 2024.

Project Status: The project is moving along on schedule. Offsite roadway work on Founders and Dowden streets has begun. Canopy installation nearing completion in the courtyard. Concrete flat work has begun in the courtyard. Track has been paved and the goal posts are installed. Football, baseball and softball fields are sodded and irrigation is complete. In Building 100, one of two elevators are installed. Interior doors are installed. Whiteboard and marker board installations have begun. Ceiling grid in the cafeteria and media center is in progress. The Admin area is being painted and ceiling grid install is nearly complete. Ongoing work in building 200; the scoreboards are installed in the gym. The music suite is being painted and ceiling grid is underway. Glazing and storefront installs are 98% complete. Exterior painting nearing completion. Ongoing work in buildings 300, 400 and 500; tile install and painting in progress and installation of hard ceilings is ongoing.



CORE HORUS

INNOVATION HIGH SCHOOL

2/21/24
Image #01

Capital Construction Update as of March 21, 2024

- **Site 130-E-SE-2** (Laureate Park) (Greenfield school)

This green field elementary school will relieve Laureate Park Elementary and Eagle Creek Elementary schools. A prototype reuse, two-story elementary school on a 30-acre site to incorporate facilities for a middle school (18 acres) and this future elementary school (12 acres) to provide improved facilities for Pre-K - 5th grade educational programs for approximately 836 student stations.

Project Status: Procurement of materials is underway. Building permit application was submitted to BCCO and a building permit number was secured. Currently processing change order for Owner Direct Purchase. Expected actual construction start in late March 2024.

The project is anticipated to be completed early May 2025.



Capital Construction Update as of March 21, 2024

Three (3) Replacement Projects:

- **Site 73-T-W-7 – Orange Technical College / West Campus (Westside):**

Project Status: We are slightly behind schedule due to permitting and design issues with offsite roadway and utility work, along with issues with sub-contractors. Sitework continues with parking lot grading and irrigation install. Canopies are nearly complete. Courtyard concrete flat work has begun. Work continues within Building 1 with solar-panel connections; install of storefront and glazing continues. Interior finish work is underway with millwork and bathroom fixture installations and partitions. Floor preparation continues. In Building 2, they are wrapping up HVAC and electric rough-out work. Stucco ceilings have begun. Drywall install and finishing is underway, along with painting. In Building 5, the install of sound wall panels is nearly complete.

The project is anticipated to be completed late May 2024.



OTC West Campus Replacement Project
(Site 73) OCPS Project: S0112
2.21.24



Capital Construction Update as of March 21, 2024

- **Site 512-T-E-1 – Orange Technical College / East Campus:**

Project Status: Project is currently on schedule. Site work continues with parking lot grading, sanitary sewer pipe and storm sewer work. Roof decking is completed and lightweight roofing continues. Second and third floor decks are poured. Stair landings in all areas are underway. HVAC contractor continues with installing hangers. Plumbing contractor continues with installing roof drains and piping.

The project is anticipated to be completed mid December 2024.



Orange Technical College (OTC)
East Campus
2.20.24



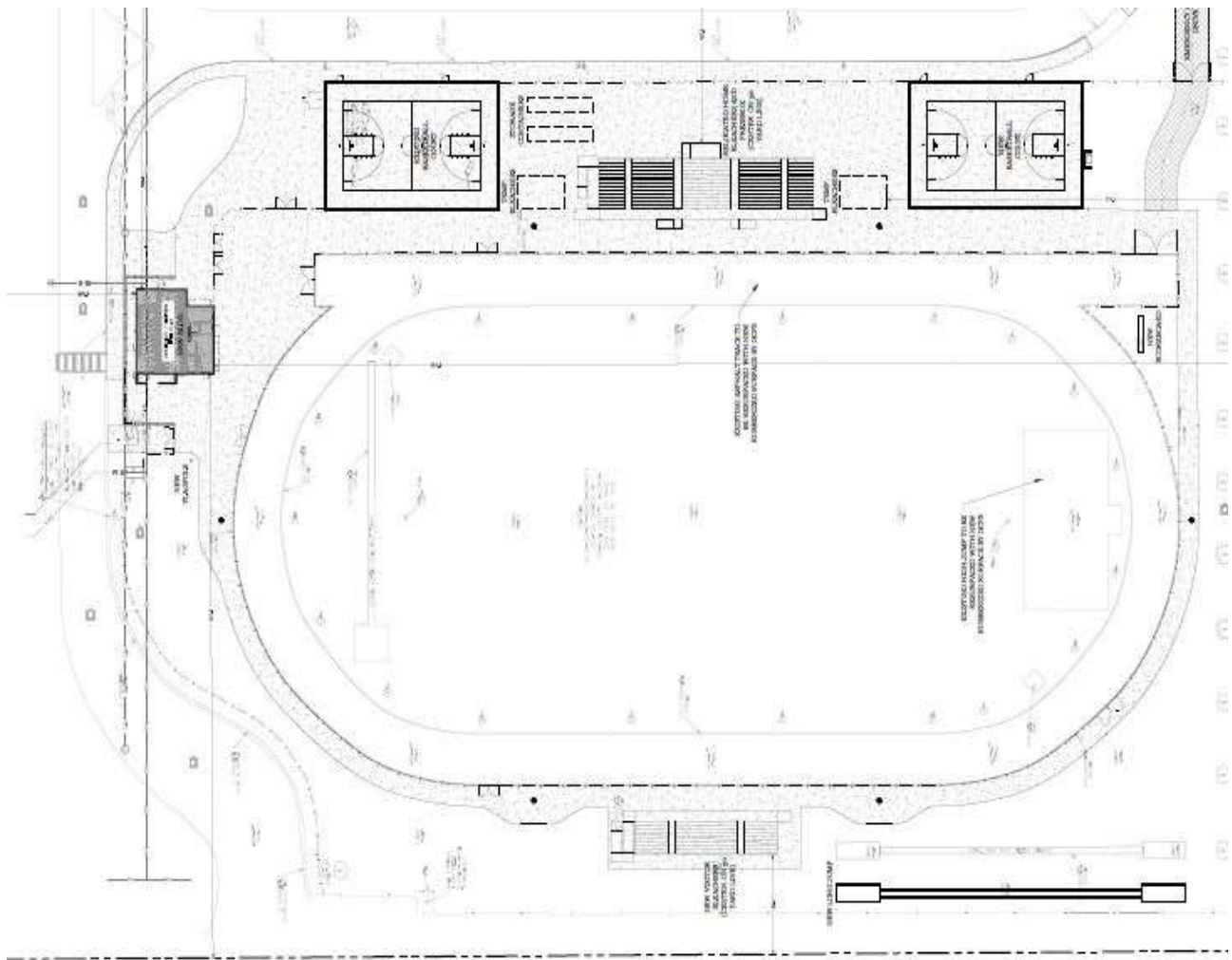
Capital Construction Update as of March 21, 2024

○ Windermere High School (On-Campus Football Stadium)

Modification of the existing practice field with track to accommodate on-site home football games, including new home and visitor bleachers to accommodate 1,070 and 480 seating, respectively; remove existing practice field lighting and provide new stadium lighting per current prototype standards, and provide new concessions/restroom building, scoreboard, flagpole with lighting, and related site modifications.

Project Status: Procurement of materials is underway. Construction fence is installed. Site demolition has commenced.

The project is anticipated to be completed early August 2025.



Capital Construction Update as of March 21, 2024

We currently have 27 projects in the planning or design phase:

PLANNING

- Site 126-E-W-4 (Relief)
- Site 136-A-E-5 (NE Maintenance) (Replacement)
- Boone HS (Comprehensive)
- Chain of Lakes MS (Comprehensive)
- Cherokee School (Repurpose)
- Clarcona ES (Old) Demolition (Repurpose)
- Esteem Academy (Repurpose)
- Jones HS (Comprehensive)
- Kaley ESE Services (Multi-System Renewal)
- Oakshire ES (Comprehensive)
- Ocoee MS (Comprehensive)
- Odyssey MS (Comprehensive)
- Olympia HS (Comprehensive)
- Palmetto ES (Comprehensive)
- Timber Creek HS (Comprehensive)

DESIGN

- Site 97-E-SE-2 ICP/West Innovation Way Area ES (Greenfield School)
- Site 121-A-W-7 West Bus Compound (Repurpose)
- Colonial HS (Comprehensive)
- FY22 Multi-Site (Comprehensive)
- Lawton Chiles ES (Comprehensive)
- NorthLake Park ES (Comprehensive)
- Oak Ridge HS (HS Functional Equity)
- Orange Technical College / South Campus (Mid-Florida) (Comprehensive)
- SY 2024-25 (Four ES Sites) (ES Functional Equity)
- SY 2024-25 (Four MS Sites) (MS Functional Equity)
- Three Points ES (Comprehensive)
- Winter Park HS (Comprehensive)

Capital Construction Update as of March 21, 2024

SINCE LAST REPORT

- Substantial Completion achieved: **Nothing to Report**
- Notice to Proceed issued: **Site 130-E-SE-2, Windermere Football Stadium, Lakeview MS comprehensive.**

CLOSEOUT

- Water Spring MS

Capital Renewal Update as of March 21, 2024

There are 63 active projects (36 large, 19 intermediate, 8 small) currently in progress for improvements at 121 sites.

Planning

We currently have 17 projects in planning at 74 sites. These include 5 large projects, 10 intermediate projects, and 2 small projects.

Since the last report, two new projects commenced planning: fire alarm replacement at Audubon Park School and Cooling Tower refurbishment at eight sites.

Also, two projects moved to construction: an elevator piston replacement at Discovery MS and carpet replacement at 14 campuses.

Design

We currently have 19 projects in design at 52 sites. These include 17 large and 2 intermediate projects.

Since the last report, a low voltage system replacement project at 38 sites moved to construction.

Construction

We currently have 27 projects in construction at 82 sites. These include 14 large, 7 intermediate, and 6 small projects.

Since the last report, an elevator piston replacement project at Discovery MS and carpet replacement project at 14 campuses moved from planning to construction.

Additionally, a low voltage system replacement project at 38 sites moved from design to construction.

Lastly, one project moved to close-out: a low voltage CCTV security system replacement at 18 sites.

Capital Renewal Update as of March 21, 2024

Changes since February 15, 2024

Planning

- New Projects
 - Audubon Park School Fire Alarm – N0211.0
 - FY24 Multi-Site Cooling Tower Refurb– N0210.0
- Moved to Construction
 - Discovery MS Elevator Piston Replacement – N0198.0
 - FY24 Multi-Site Carpet Replacement – N0190.0

Design

- Moved to Construction
 - Low Voltage at 38-Sites – N0120.0

Construction

- Moved from Planning
 - Discovery MS Elevator Piston Replacement – N0198.0
 - FY24 Multi-Site Carpet Replacement – N0190.0
- Moved from Design
 - Low Voltage at 38-Sites – N0120.0
- Moved to Close-out
 - FY22 Low Voltage CCTV at 18-Sites – N0158.0

Close-out

- Moved from Construction
 - FY22 Low Voltage CCTV at 18-Sites – N0158.0
- Moved to Closed
 - Audio Enhancement Intercom Pilot - N0180.0
 - Evans HS Building 32 HVAC Replacement - N0166.0
 - OCPS ACE Intercom Replacement - N0186.0
 - West Oaks ES Gutter Replacement - N0143.16

Capital Renewal Update as of March 21, 2024

Active Projects with Construction Cost Exceeding \$10M per Project Site

Apopka High School – Multi-System Capital Renewal Project

Estimated Guaranteed Maximum Price: \$16,895,000

Site

- Replacement of pumps and control panel at lift stations

Exterior

- Repair and replacement of exterior (EIFS) wall system in select areas
- Reroofing of select buildings

Heating, Ventilating and Air Conditioning (HVAC) Renovations

- Refurbishment of existing air handling units (AHUs) and the addition of bi-polar ionization
- Replacement of the existing building automation system (BAS) components
- Replacement of exhaust fans, outside air dampers, variable frequency drives (VFDs), electric heating coils, and selected variable air volume (VAV) boxes
- Selective replacement of Dx and mini-split A/C units and connection to the BAS controls

Electrical

- Electrical power modifications/upgrades to support the HVAC system design
- Repair of lightning protection system
- Replacement of parking lot light fixtures with LED type fixtures

Life Safety

- Replacement of fire alarm system

Capital Renewal Update as of March 21, 2024

Active Projects with Construction Cost Exceeding \$10M per Project Site

Bonneville Elementary School – Multi-System Capital Renewal Project Guaranteed Maximum Price: \$10,303,515

Site

- New underground storm piping
- Canopy removal to accommodate underground storm piping

Exterior

- Reroofing of select buildings

Heating, Ventilating and Air Conditioning (HVAC) Renovations

- Replacement of existing air handling units (AHUs) and the addition of bi-polar ionization
- Replacement of roof top units (RTU), packaged terminal air conditioning (PTAC) units, exhaust fans, gravity vents, kitchen exhaust fan, split systems, fan coil units (FCU), variable air volume (VAV) boxes, and make up air unit

Chiller Replacement

- Replacement of existing chillers and associated pumps, piping, and equipment

Electrical

- Electrical power modifications/upgrades to support the HVAC system design
- Campus wide lighting upgrades

Capital Renewal Update as of March 21, 2024

Active Projects with Construction Cost Exceeding \$10M per Project Site

Ocoee High School – Chiller Replacement-HVAC Capital Renewal Project Estimated Guaranteed Maximum Price: \$24,196,000

Heating, Ventilating and Air Conditioning (HVAC) Renovations

- Replacement of existing air handling units (AHUs) and the addition of bi-polar ionization.
- Replacement of the existing building automation system (BAS), campus-wide
- Refurbishment of mechanical rooms, including replacement of gauges, sensors, valves and other appurtenances and restoration of insulation
- Replacement of exhaust fans, outside air dampers, variable frequency drives (VFDs), electric heating coils
- Replacement of all variable air volume (VAV) boxes
- Equipment resizing and reengineered air flow requirements
- Selective replacement of ductwork to accommodate the new design
- Selective replacement of Dx and mini-split A/C units

Chiller Replacement

- Replacement of existing chillers, cooling towers, and associated pumps, piping, and equipment with magnetic bearing chillers
- Replacement of existing controls
- Equipment resizing based on load modifications
- Provision of a new refrigerant leak detection system

Electrical

- Electrical power modifications/upgrades to support the HVAC system design and new air-cooled chillers
- Reuse of existing feeders or breakers and replacement as needed

Capital Renewal Update as of March 21, 2024

Active Projects with Construction Cost Exceeding \$10M per Project Site

Piedmont Lakes Middle School – Mechanical-HVAC Capital Renewal Project Estimated Guaranteed Maximum Price: \$15,700,000

Heating, Ventilating and Air Conditioning (HVAC) Renovations

- Replacement of the existing building automation system (BAS), campus-wide
- Redesign of a new Air Distribution System campus-wide per the latest Design Guidelines inclusive of all associated equipment and accessories
- Conversion of kitchen units from Direct Expansion Cooling (Dx) to Chilled Water
- Replacement of existing wall mounted mini-split system in select areas
- Evaluation of all IDF and CCTV rooms current heat load requirements to include with the new Air Distribution System

Plumbing

- Replacement of approximately 400 LF of underground sanitary sewer line
- Replacement of all hot water heaters

Electrical

- Installation of power and data ports for building automation system (BAS) interconnectivity and new electrical circuitry as required to support all new equipment installation

Interior

- Replacement of finishes as needed to accommodate new design

Capital Renewal Update as of March 21, 2024

Active Projects with Construction Cost Exceeding \$10M per Project Site

Roberto Clemente Middle School – Multi-System Capital Renewal Project Guaranteed Maximum Price: \$ 16,241,416

Site

- Correcting drainage issues campus-wide

Roofing

- Roof replacement of buildings 100, 200, 300, 400 and 700
- Roof repairs of building 500

Exterior

- Select door replacement
- Replace exterior door and window seals

Interior

- Select door replacement
- Replacement of finishes as needed to accommodate new design
- Replacement of serving line equipment

Heating, Ventilating and Air Conditioning (HVAC) Renovations

- Replace HVAC system equipment in buildings 100, 200, 300, and 500
- Refurbishment of HVAC system in other buildings
- Replacement of the existing building automation system (BAS), campus-wide

Plumbing

- Reconfigure restrooms in building 700 for ADA compliance

Electrical & Systems

- Electrical upgrades necessary for HVAC work
- Exterior lighting upgrades to LED
- Lighting LED upgrade in select buildings
- Intercom system replacement for entire campus
- Intrusion detection and security CCTV upgrades campus-wide

Life Safety

- Fire alarm system interconnection upgrade to fiber

Capital Renewal Update as of March 21, 2024

Active Projects with Construction Cost Exceeding \$10M per Project Site

West Orange High School – HVAC Renovation-HVAC Capital Renewal Project Estimated Guaranteed Maximum Price: \$10,300,000

Heating, Ventilating and Air Conditioning (HVAC) Renovations

- Refurbishment or replacement of existing air handling units (AHUs) and the addition of bi-polar ionization
- Replacement of the existing building automation system (BAS) controls, campus-wide
- Refurbishment of mechanical rooms, including replacement of gauges, sensors, valves and pumps
- Replacement of exhaust fans, outside air dampers, variable frequency drives (VFDs), electric heating coils, and selected variable air volume (VAV) boxes
- Selective replacement of Dx and mini-split A/C units

Electrical

- Electrical power modifications/upgrades to support the HVAC system design
- Reuse of existing feeders or breakers, lightning protection system and replacement as needed

CHANGE ORDER REPORT

Change Order Report

Facilities & Construction Contracting
January 2024

There are no significant change orders or amendments to the report
for the month of January 2024.

Facilities & Construction Contracting

COVE Report for January 2024

CONTRACTS AMENDED										
ITEM NO.	PROJECT NAME	VENDOR NAME	DOCUMENT TYPE	ORIGINAL DOC No.	DOC No.	REQUESTED AMOUNT	SERVICE TYPE	RFQ No.	REASON FOR CHANGE	APPROVAL REQUIREMENT
1	Elementary School Site 97-E-2	Schenkel & Shultz, Inc.	Design Change Directive	2137SCON002 SCHENKEL	1	\$15,075.26	Architectural & Engineering Services	2137PS	Additional design services to incorporate 2023 Florida Building Code (8th Edition) updates for prototype new school relief project. (additional Est. Constr. Cost of \$150,000.00).	K. Michael Winter, Facilities Executive Director
2	Elementary School Site 97-E-2	Schenkel & Shultz, Inc.	Design Change Directive	2137SCON002 SCHENKEL	3	\$10,788.70	Architectural & Engineering Services	2137PS	Additional design services to incorporate window numbering, roof numbering, site signage, and bollards for prototype new school relief project. (additional Est. Constr. Cost of \$75,000.00).	Catherine Sullivan on behalf of Rory A. Salimbene, Chief Facilities Officer
3	Jones HS	Terracon Consultants, Inc.	Amendment	1517333	1	\$20,333.67	Geotechnical & Environmental Services	1517PS	Additional natural attenuation monitoring sampling to gauge groundwater and calculations of relative groundwater elevations in all monitoring wells and piezometer locations for environmental project.	Jennifer Fowler, Sr. Director Environmental Compliance and Sustainability
4	Windermere HS On-Campus Football Stadium	Schenkel & Shultz, Inc.	Design Change Directive	1910042	3	\$7,630.96	Architectural & Engineering Services	1910PS	Additional design services to add understory trees to east and west property lines for site improvement project. (additional Est. Constr. Cost of \$85,000.00).	Catherine Sullivan, Sr. Facilities Manager, Design
5	Windermere HS On-Campus Football Stadium	Schenkel & Shultz, Inc.	Design Change Directive	1910042	4	\$6,830.01	Architectural & Engineering Services	1910PS	Additional design services to perform traffic impact analysis regarding the possibility of relocating football games from Deputy Scott Pine Park to Windermere HS for the site improvement project.	Catherine Sullivan, Sr. Facilities Manager, Design
6	Windermere HS Softball Field Restoration*	T2 UES, Inc. dba T2 Utility Engineers	Amendment	1523149	1	\$7,152.28	Surveying Services	1523PS	Topographic, boundary, and underground utility location surveying for district capital project.	Catherine Sullivan, Sr. Facilities Manager, Design

*Not Funded by Sales Tax or Capital Renewal

Facilities & Construction Contracting

COVE Report for January 2024

CHANGE ORDERS APPROVED												
ITEM NO.	PROJECT NAME	VENDOR NAME	DOCUMENT TYPE	ORIGINAL DOC No.	AM GMP No.	DOC No.	REQUESTED AMOUNT	SERVICE TYPE	RFQ No.	REASON FOR CHANGE	ODP %	APPROVAL REQUIREMENT
1	Bonneville ES, Legacy MS, Washington Shores PLC Multi-System Renewal	T & G Corporation d.b.a. T & G Constructors	Change Order	2201CMSCON T&G	1	1	(\$4,549,614.00)	Construction Management Services	2201CM	Estimated ODP for the capital renewal project.		Craig Jackson on behalf of Rory A. Salimbene, Chief Facilities Officer
2	Liberty MS Plumbing	SkyBuilders USA, LLC	Change Order	19CM09051B			\$0.00	Construction Management Services	19CM09	A time extension of 42 days due to installation of new sinks to comply with the National Emission Standards for Hazardous Air Pollutants report for the capital renewal project.		Craig A. Jackson, Sr. Construction Director

Facilities & Construction Contracting

COVE Report for January 2024

CHANGE ORDERS APPROVED												
ITEM NO.	PROJECT NAME	VENDOR NAME	DOCUMENT TYPE	ORIGINAL DOC No.	AM GMP No.	DOC No.	REQUESTED AMOUNT	SERVICE TYPE	RFQ No.	REASON FOR CHANGE	ODP %	APPROVAL REQUIREMENT
3	Middle School Site 129-M-2*	Walker & Company, Inc.	Change Order	21CM23SCON WALKER	2	4	\$168,248.92	Construction Management Services	21CM23	Use of off-site turn lanes allowance (\$350,000.00) and additional cost of \$168,248.92 due to off-site Pearson Avenue improvement under review and permitting by City of Orlando, which did not allow time to bid work as part of GMP for prototype new school relief project.		Superintendent / Rory A. Salimbene, Chief Facilities Officer
4	Water Spring MS 65-M-4*	CORE Construction Services of Florida, LLC	Change Order	20CM16SCON CORE	2	6	\$149,471.21	Construction Management Services	20CM16	Final ODP reconciliation for prototype new school relief project.		Craig Jackson on behalf of Rory A. Salimbene, Chief Facilities Officer

*Not Funded by Sales Tax or Capital Renewal

OCPS FACILITIES & CONSTRUCTION CONTRACTING

RFQs in Progress: FEBRUARY 2024

No.	Contract Description	Pre Submittal Meeting	Open Date	Shortlist Meeting	Interview Meeting	Board / CFO Date	Construction Budget	Firm(s) Awarded	Status
RFQ 2316PS	A/E Services for Site 136-A-E-5 Northeast Maintenance New Ancillary Project	10/26/2023	11/15/2023	11/28/2023	1/22/2024	2/13/2024	\$ 9,500,000.00	Spiezle Architectural Group, Inc.	Awarded
RFQ 2317PS	A/E Services for Jones HS Comprehensive Renovation Project	11/8/2023	11/21/2023	12/5/2023	1/11/2024	2/13/2024	\$ 37,500,000.00	Long & Associates Architects/Engineers, Inc.	Awarded

LIFE CYCLE COST ANALYSIS

SALES TAX TIMELINE

GLOSSARY OF TERMS

Funding Source Descriptions

CIT - Capital Improvement Tax: Funds derived from a 1.5 millage levy on local property. Revenues may be used for payment of principal and interest on COPS, for purchase of new and replacement equipment; for maintenance of existing facilities; rental and leasing of educational facilities and sites; purchase of new and replacement school buses; project management and for construction and remodeling of new or existing facilities. Based on 2017 legislation, a portion of the funds derived from the capital improvement millage may be distributed to eligible charter schools to pay for capital needs including but not limited to construction, vehicle purchases, and real property acquisition.

COPS - Certificates of Participation: These funds are not a source of revenue but the proceeds of a twenty-five-year loan against future property tax revenues. Funds may be used to remodel, renovate or replace existing schools and acquire land and construct additional schools.

CSR - Class Size Reduction: The voter approved constitutional amendment placed the responsibility for providing the necessary operating and capital funds required on the Legislature. The Class Size Reduction Capital Outlay program was established to provide funds to eligible public school districts for capital outlay purposes to reduce class size or for any lawful capital outlay purpose if the class size maximum had been met. In fiscal year 2000, the district received \$147.7 million from this program.

IMPACT - School Impact Fees: Florida Statutes direct local governments to make efficient and adequate provisions for schools. Impact fees represent a total or partial reimbursement for the cost of additional facilities or services necessary as a result of the new development. Funds can only be used to pay for capital expenditures resulting from student growth (i.e. relief schools).

QSCB - Qualified School Construction Bonds: QSCBs are financial instruments that provide a subsidy in the form of a tax credit to a bank or other financial institution that holds the QSCBs. The tax revenues are made available by the federal government to help fund school construction, rehabilitation, repair and land acquisition. These bonds were authorized by the federal government through the American Recovery and Reinvestment Act (ARRA) of 2009.

SIT - School Infrastructure Thrift Award: The SIT program provided incentive grants to districts for savings realized through functional and frugal school construction. These awards were funded by the Educational Enhancement (Lottery) Trust Fund. The district received a total of \$22.2 million for qualifying capital expenses.

Common Terms by OCPS Facilities

AE - Architect/ Engineer

BAS - Building Automation System

BIC - Ball-in-court

BOS - Bill of Sale: Utility providers may require a sketch, legal description, and / or a bill of sale (documentation of sale of transfer of goods) for infrastructure improvements performed by the construction contractor.

CCD - Construction Change Directive

CCTV - Closed Circuit Television

CE - Capacity Enhancement: Permanent classroom addition at campuses with long term needs with no forecasted alternative for relief.

CFI - Certificate of Final Inspection

CM - Construction Manager

CO - Change Order

CR - Contingency Request: GMP contract amendments include not-to-exceed values for Contractor's Contingency and Owner's Contingency. Both require Owner approval prior to use.

DX - Direct Expansion: Direct expansion cooling is a type of refrigerant based HVAC system.

ES - Elementary School

FE - Functional Equity: Provision of functional core spaces (to meet current prototype design) to remedy program deficiencies on existing campuses.

FISH - Florida Inventory of School Houses: The Florida Department of Education maintains a central database of information for all educational and non-instructional facilities throughout the state.

FY - Fiscal Year

GC - General Contractor

GMP - Guaranteed Maximum Price

GR - General Requirements: GMP contract amendments include not-to-exceed values for Contractor reimbursable expenses that are not directly related to the construction cost of the work.

HS - High School

Common Terms by OCPS Facilities

HVAC - Heating, Ventilation, and Air Conditioning

IDF - Intermediate Distribution Frame: IDF rooms are utilized for secondary distribution of networking systems throughout the facility.

INT - Intermediate: Projects with construction costs between \$280,000 and \$2,000,000.

LF – Linear Foot

LG - Large: Projects with construction costs that exceed \$2,000,000.

MDF - Main Distribution Frame: MDF rooms are utilized for primary distribution of networking systems throughout the facility.

MS - Middle School

NTP - Notice to Proceed

O&M - Operation and Maintenance

ODP - Owner Direct Purchase: The ODP program allows the District to benefit from its tax-exempt status by directly purchasing materials from suppliers, thereby avoiding the sales tax that contractors purchasing the same materials would pay.

PM TEAM - Program Management Team

REPL - Replacement

SERV - Service

SF - Square Foot

SM - Small: Projects with construction costs less than \$280,000.

SUBST - Substantial

SY - School Year

TBD - To Be Determined

TCO - Temporary Certificate of Occupancy

WIP - Work in Progress

Wt'd Age - Weighted Age: The weighted age of a facility is the average number of years since construction or comprehensive renovation. When buildings on a campus have different ages, an average is determined using the net floor area as the weighting factor.